

Irish St. Louis Parishes

MAP
OF THE
CITY OF ST. LOUIS
IRISH POPULATION
CENSUS OF 1930
CITY PLAN COMMISSION
1934



—LEGEND—

- Indicates 5 people born in Northern Ireland or the Irish Free State.
Northern Ireland Population= 555
Irish Free State Population= 5057
Total Population = 5612
- ▭ Indicates Tract Boundaries
- ▨ Indicates Parks & open spaces.

CITY LIMITS

CITY LIMITS

MISSISSIPPI RIVER

CITY LIMITS

MISSISSIPPI RIVER

MISSISSIPPI RIVER

NORTH PORTION OF CITY

St. Patrick's

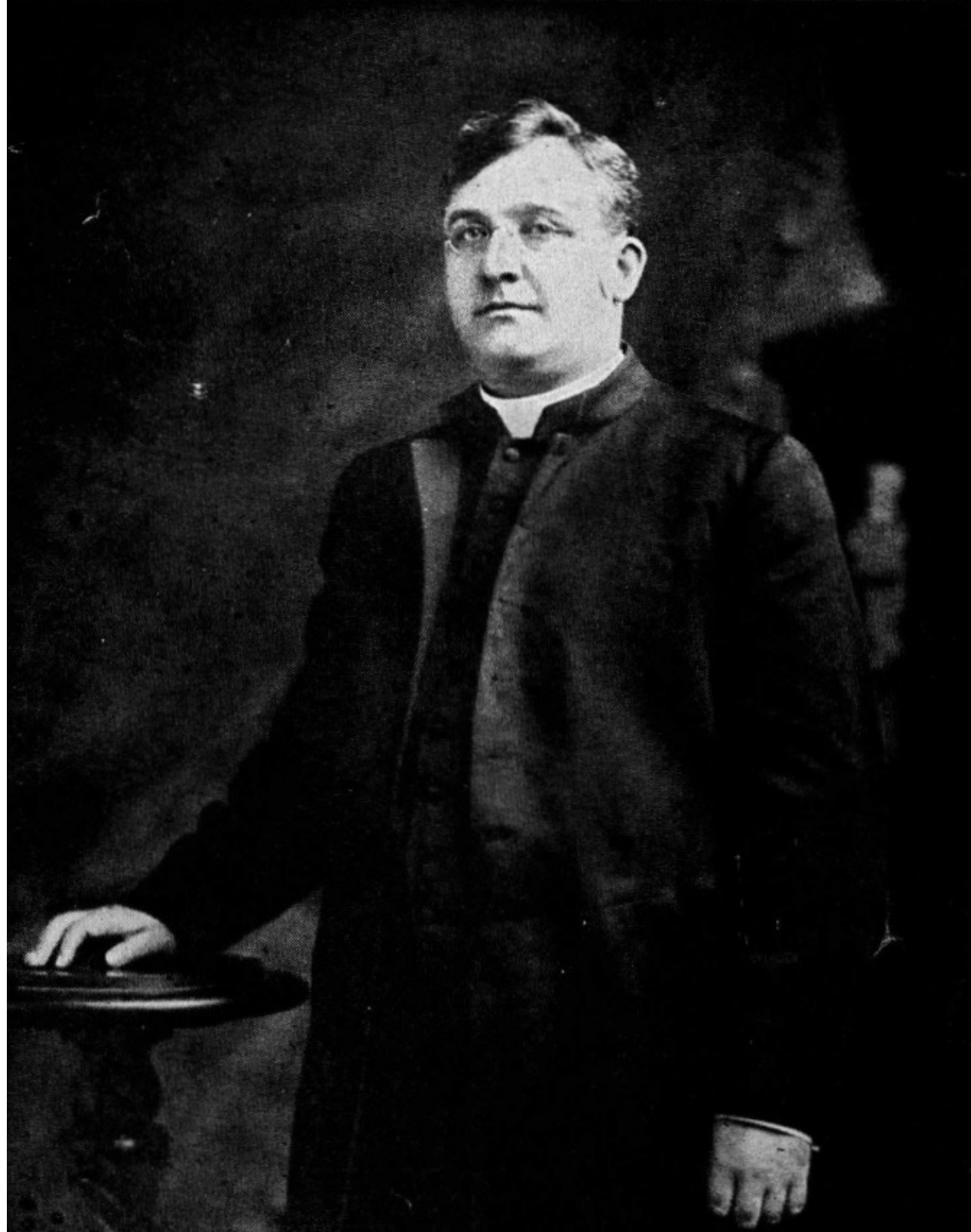
St. Patrick's, 1800s
Archdiocesan
Archives



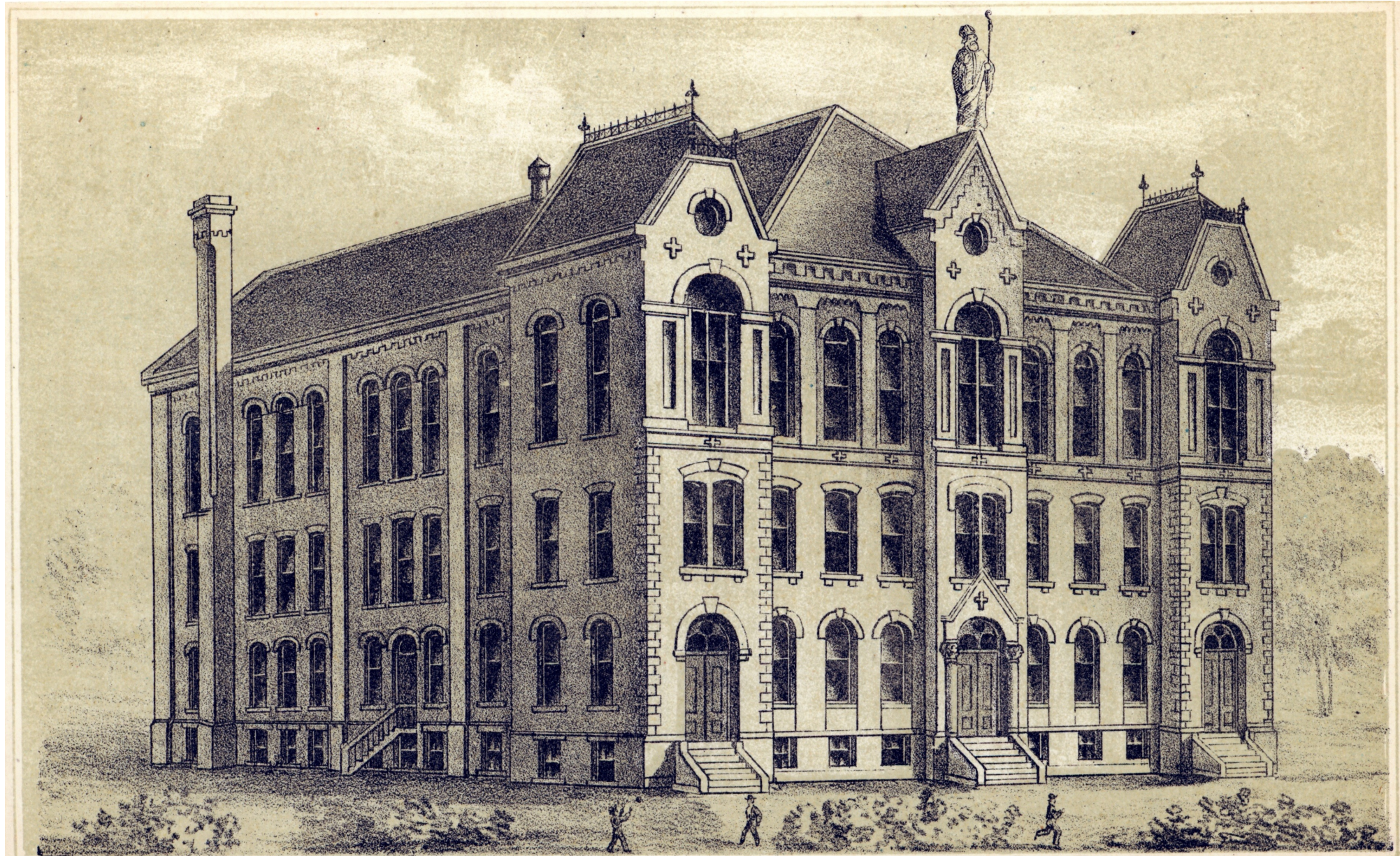
Statue of St. Patrick from
Interior of Church,
Archdiocesan Archives



Rev. Timothy Dempsey
Archdiocesan Archives

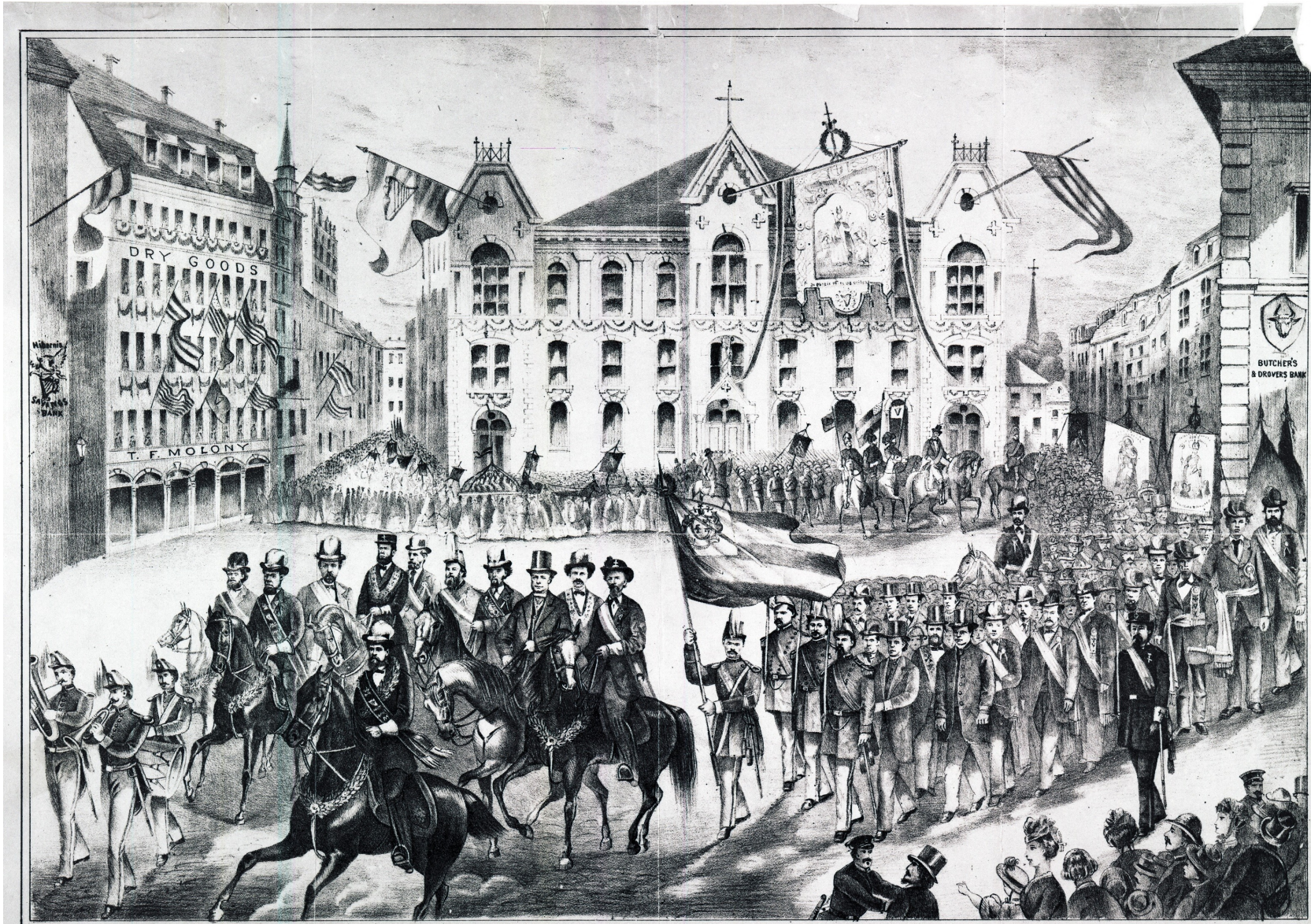


C. Hamilton & Co., St. Patrick's School and Hall, 1870, Missouri History Museum, N33339



C. HAMILTON & CO. LITH. ST. LOUIS.

ST. PATRICK'S SCHOOL & HALL - ST. LOUIS, MO.



LITH. FOR THE CENTRAL MAGAZINE

BY G. LEHR, ST. LOUIS.

Saint Patrick's Day Procession in Saint Louis 1874

John Tolan, Col. Temp. Gen.	John Grenell, Col. A.S.	Colquhoun, Aid. Grand Marshal	M. Cullen, A.S.M.	S.T. Mulligan, A.S.M.	J.B. Busby, I.C.	Rev. F. Brady, A.T.A.B.S.	Rev. J.J. Donahy, S.P. A.B.S.	P. Ahern, Aid. Grand Marshal	Wm. Stearns, S.P. A.B.S.	Luke C. O'Reilly, A.S.M.
Peter Jackson, S.P. A.B.S.	John M. McCormack, I.A.S.	General Quartermaster, S.P. A.B.S.	Rev. Father and Archdeacon, Aid. Grand Marshal	Dr. Jas. C. Corbin, Aid. Grand Marshal	Capt. T. O'Sullivan, S.P. A.B.S.	M. Mulvaney, S.P. A.B.S.	Rev. La. Higgins, S.P. A.B.S.	G. Young, S.P. A.B.S.	Thos. Shannon, S.P. A.B.S.	Jas. Barry, S.P. A.B.S.
	Patrick Menahan, Grand Marshal				Dr. J. J. Donahy, S.P. A.B.S.	J. J. Donahy, S.P. A.B.S.	John Mulvaney, S.P. A.B.S.	John Mulvaney, S.P. A.B.S.	John Mulvaney, S.P. A.B.S.	John Mulvaney, S.P. A.B.S.

CENTER BUILDING IS SAINT PATRICK'S SCHOOL & HALL
 Located on West side of Seventh St. between Carr St. and Biddle St.

St. Patrick's Hotel for Working Women, Archdiocesan Archives



St. Patrick's Day Nursery, Archdiocesan Archives



Children of the St. Patrick's Day Nursery, Archdiocesan Archives



Parish - Photographic Materials - St Patrick Church circa 1940



Parish - Photographic Materials - St Patrick sanctuary and altar after renovations circa 1950



Parish - Photographic Materials - St Patrick interior before renovations circa 1940

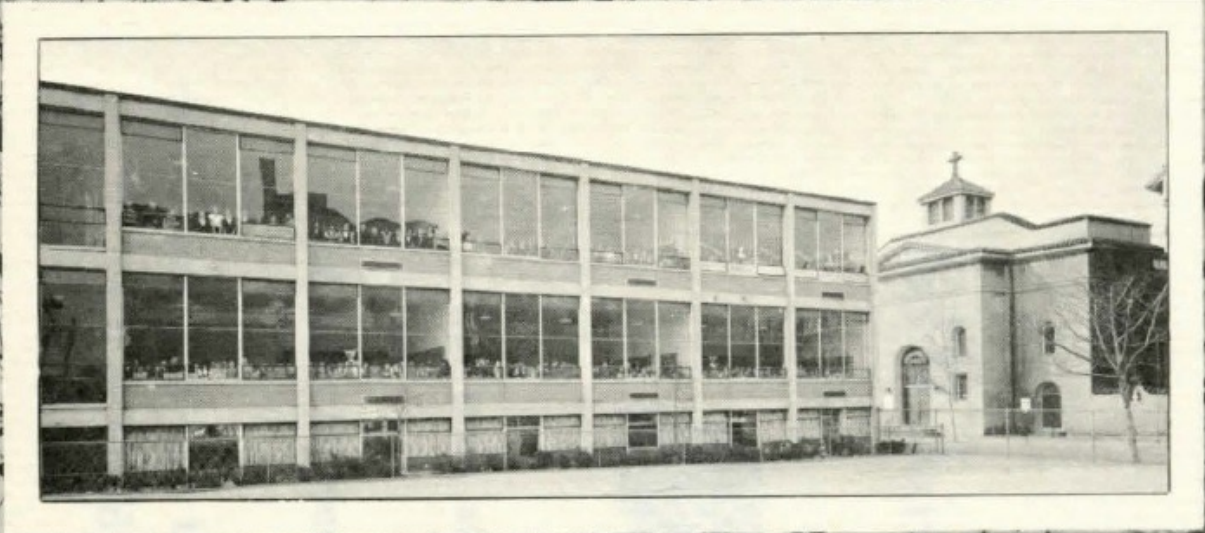
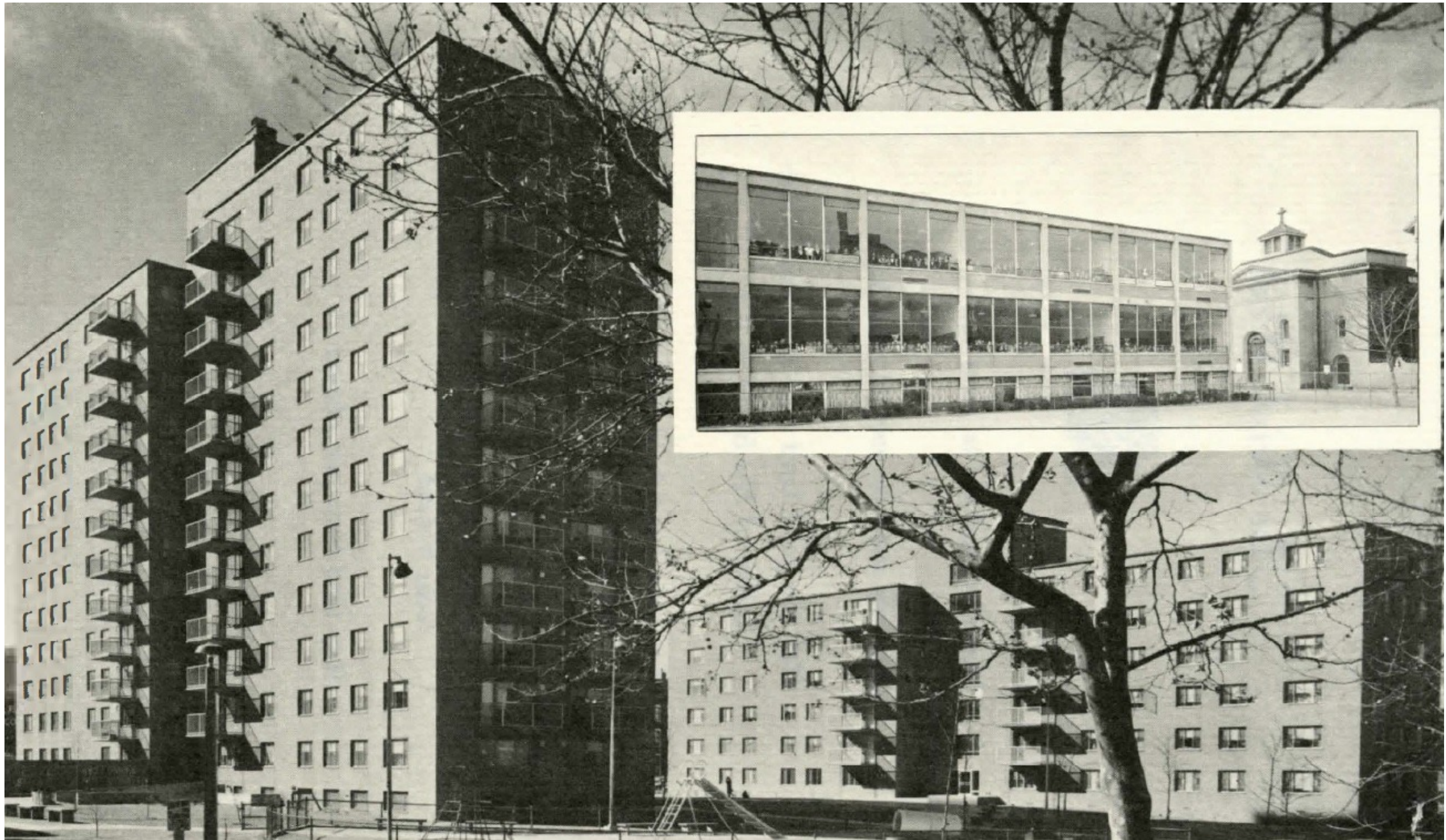


Parish - Photographic Materials - St Patrick Midnight Mass 1946(2)



Parish - Photographic Materials - St Patrick Midnight Mass 1946





St. Patrick, University City, 1940-2001, later St. Andrew Kim, demolished.



© Chris Naffziger, St. Louis Patina

St. Lawrence O'Toole's

Parish - Combined Records
- St Lawrence O'Toole
Article, Reports and Brief
History 1855-1948, N.D.



Parish - Photographic
Materials - St. Lawrence O
Toole Church building,
exterior, circa 1940



St. Lawrence Henry Cadets at St. Kevin Cornerstone Laying, April 1889, Archdiocesan Archives.



St. Lawrence O'Toole Building, 14th and O'Fallon, 1971, Missouri History Museum, P0197-S02-00035



St. John the Evangelist's

Historical - Photograph - St John first church 1848 photograph circa 1940



Parish - Photographic
Materials - St John Exterior
circa 1940



Parish - Photographic
Materials - St John Interior
no date

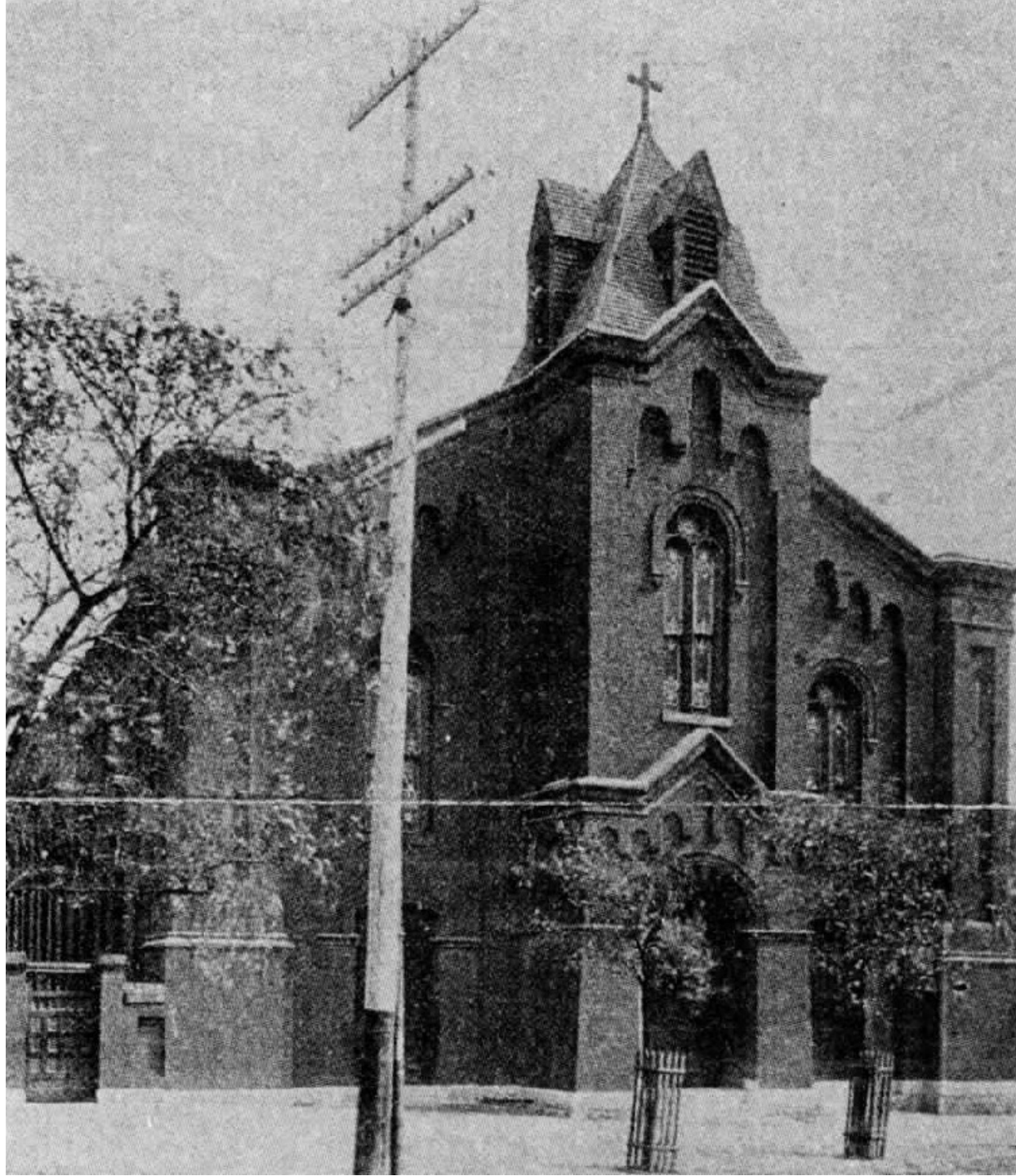


St. Bridget of Erin's

First St. Bridget's "The Chapel", Archdiocesan Archives



St. Bridget's before
completion of the
tower, 1859,
Archdiocesan Archives



Historical - Photograph - St Bridget church exterior 1853



Historical - Photograph – St.
Bridget Church circa 1940



St. Bridget's, 1800s, Archdiocesan Archives



St. Bridget's Rectory(?), c. 1950, Archdiocesan Archives



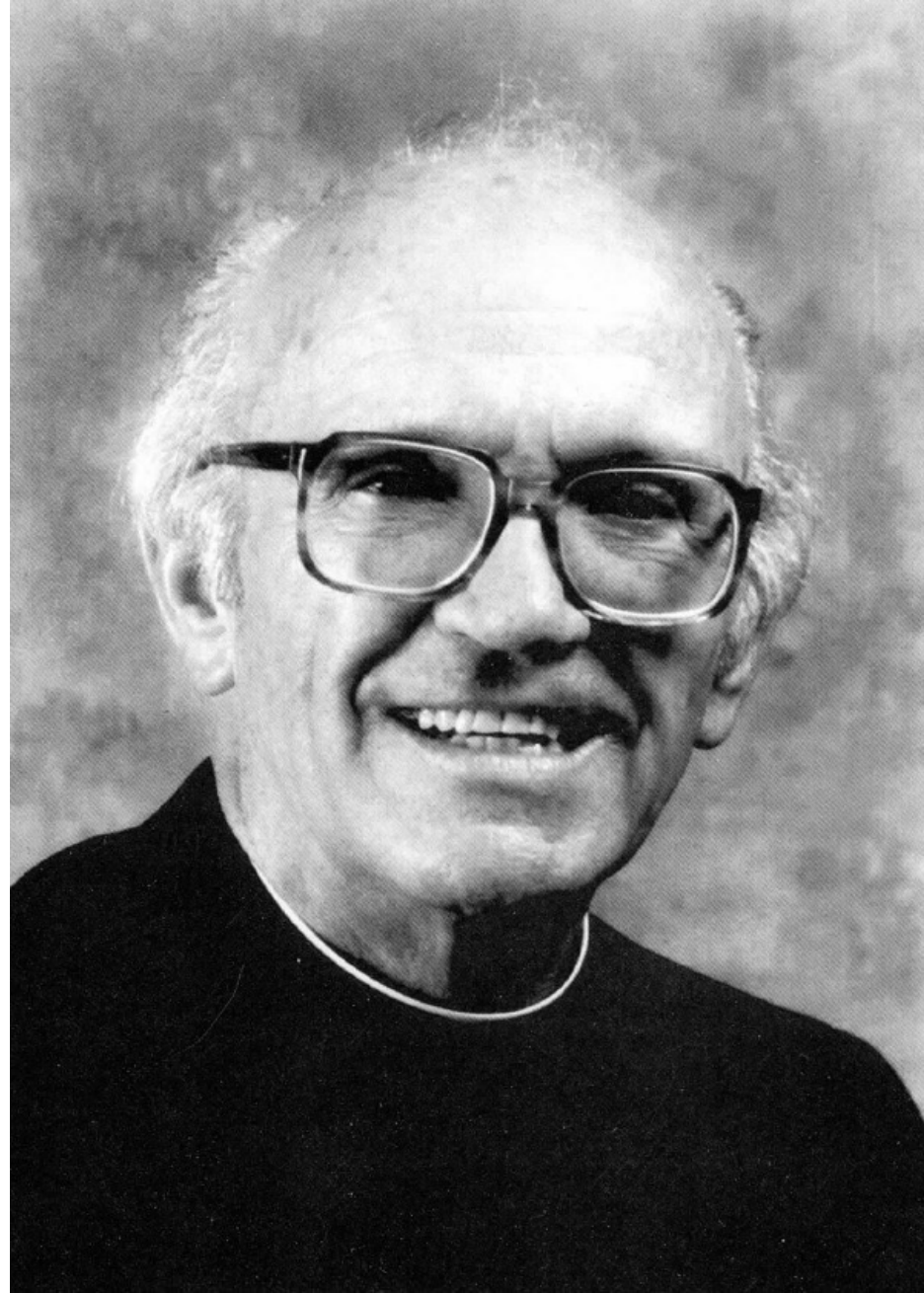
Historical - Photograph -
St Bridget Church circa
1990



St. Bridget's, 1993,
Archdiocesan Archives



Rev. Msgr. John Shocklee, Pastor of St. Bridget's, 1956-1972, Archdiocesan Archives



2016

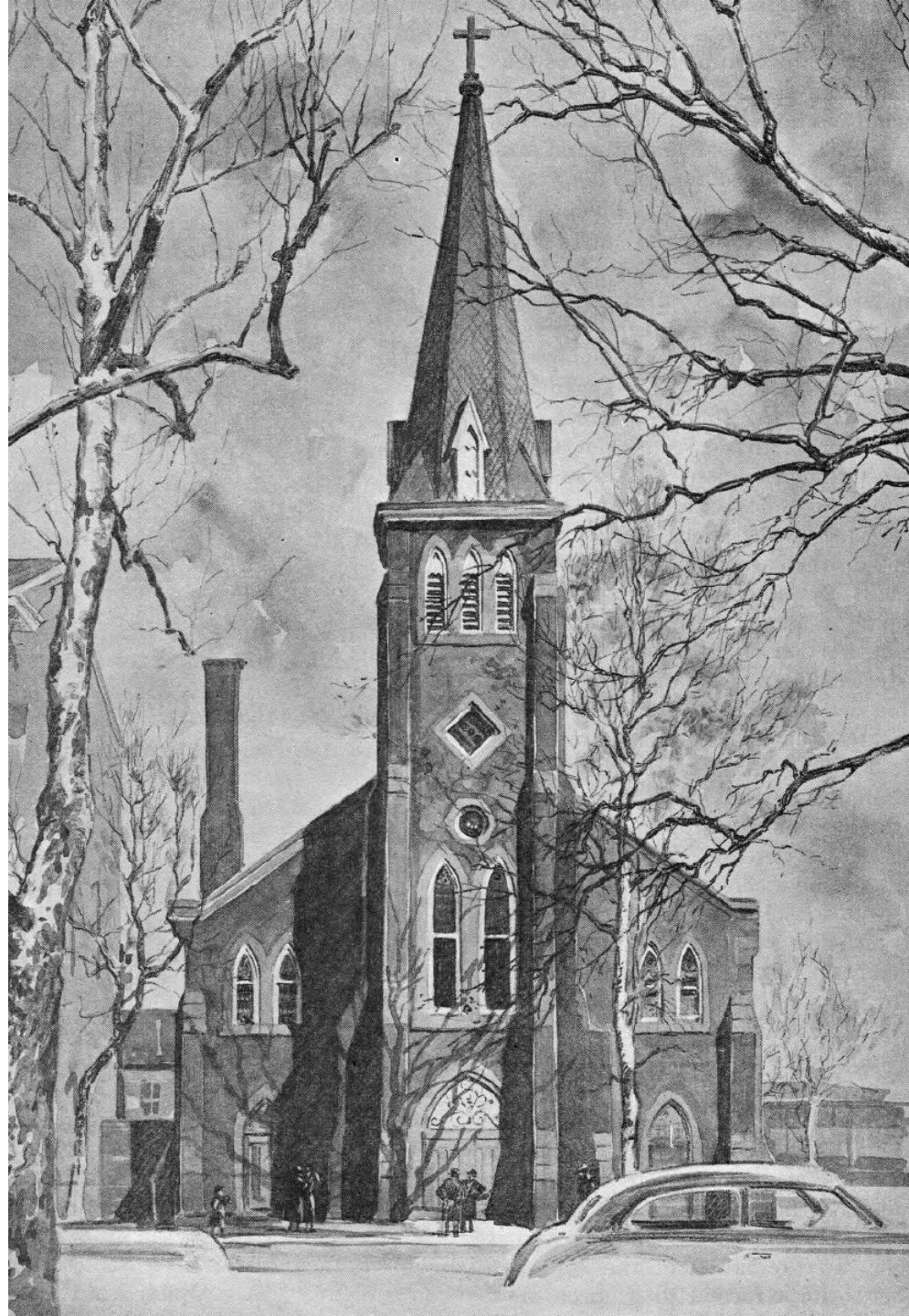


St. Michael's

Parish - Photographic
Materials - St Michael
Exterior circa 1940



Painting of St. Michael's,
Archdiocesan Archives



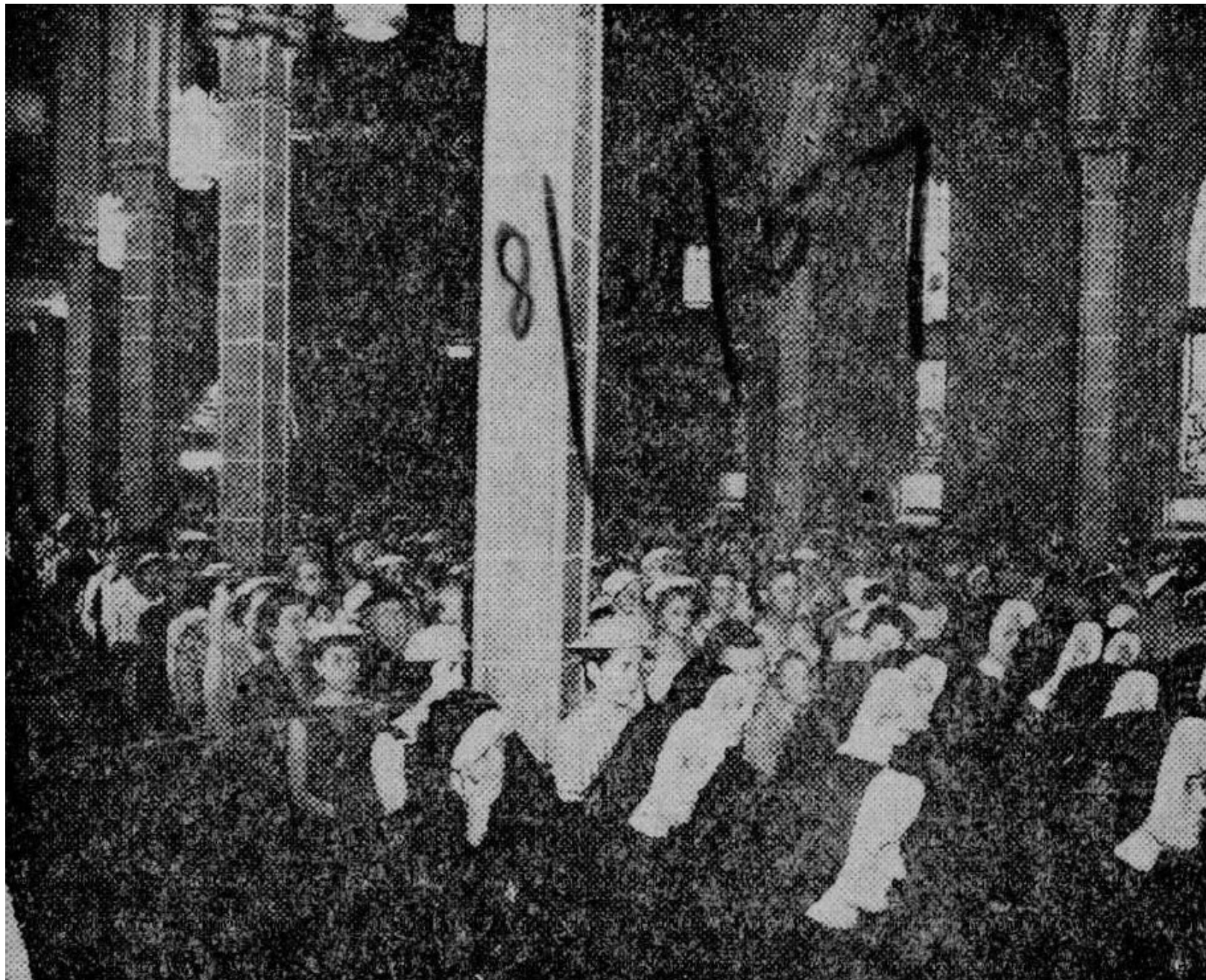
St. Michael's High Altar, Archdiocesan Archives



Organ and Entrance to St. Michaels, Archdiocesan Archives



St. Michael's Last Mass, August 25, 1957, Archdiocesan Archives



First Room, 1895, Archdiocesan Archives

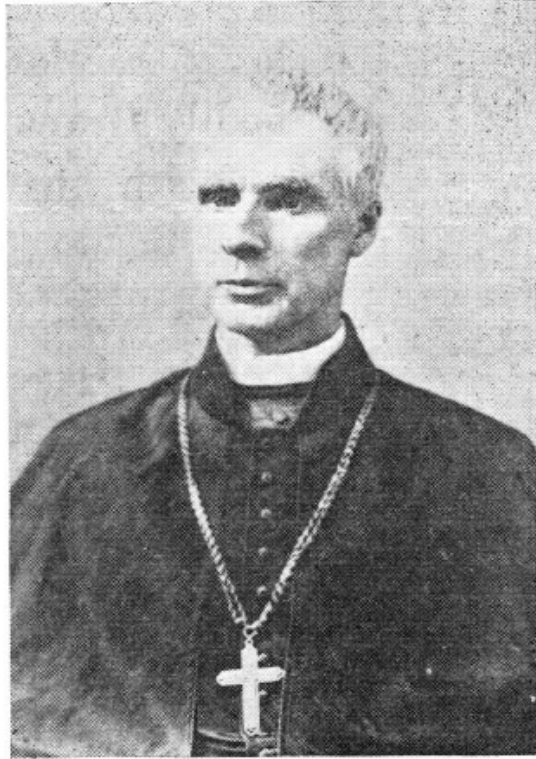




© Chris Naffziger, St. Louis Patina



Rev. Patrick O'Brien



The Most Rev. John J. Hogan, D. D.



Rev. William Wheeler



Rev. Andrew Eustace



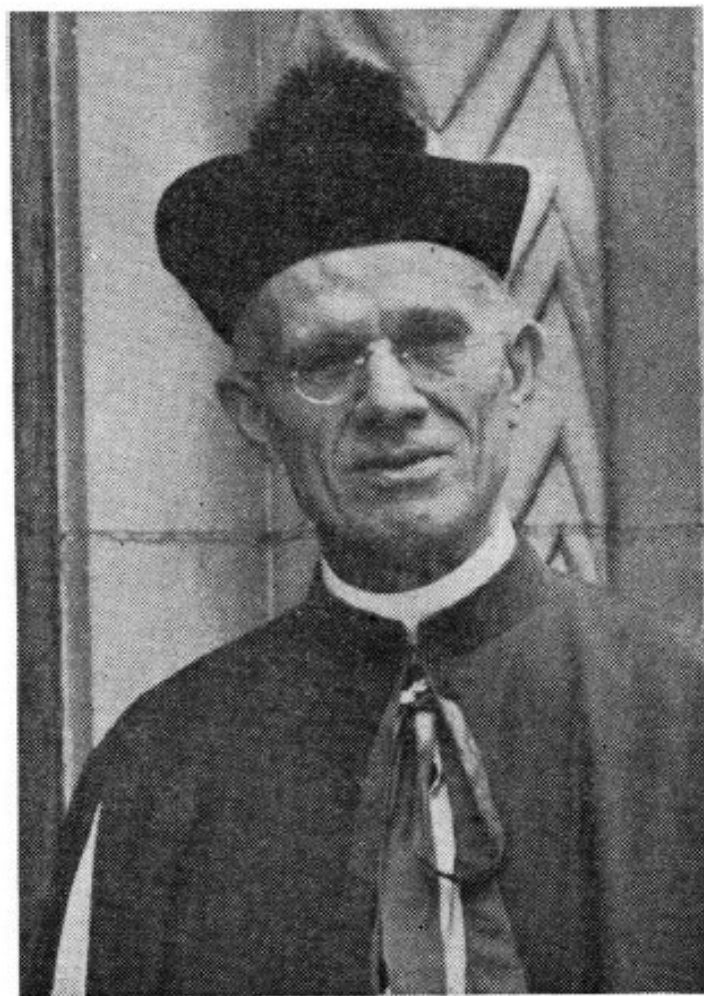
The Most Rev. Patrick Feehan, D. D.



Rev. James Bourke



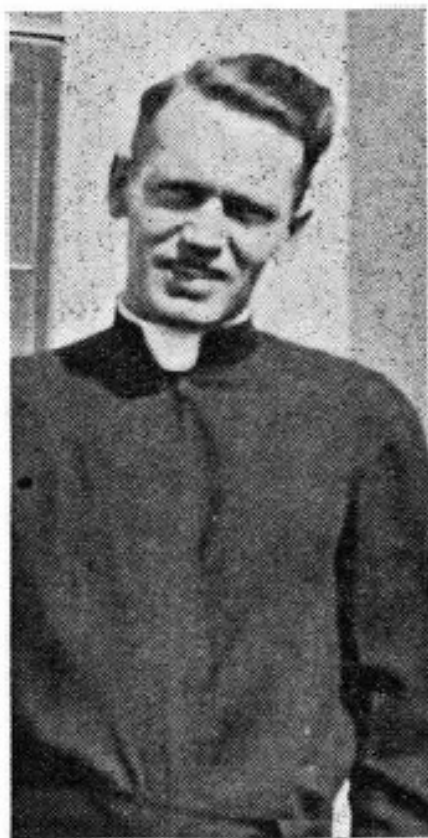
Rev. George Heffernan



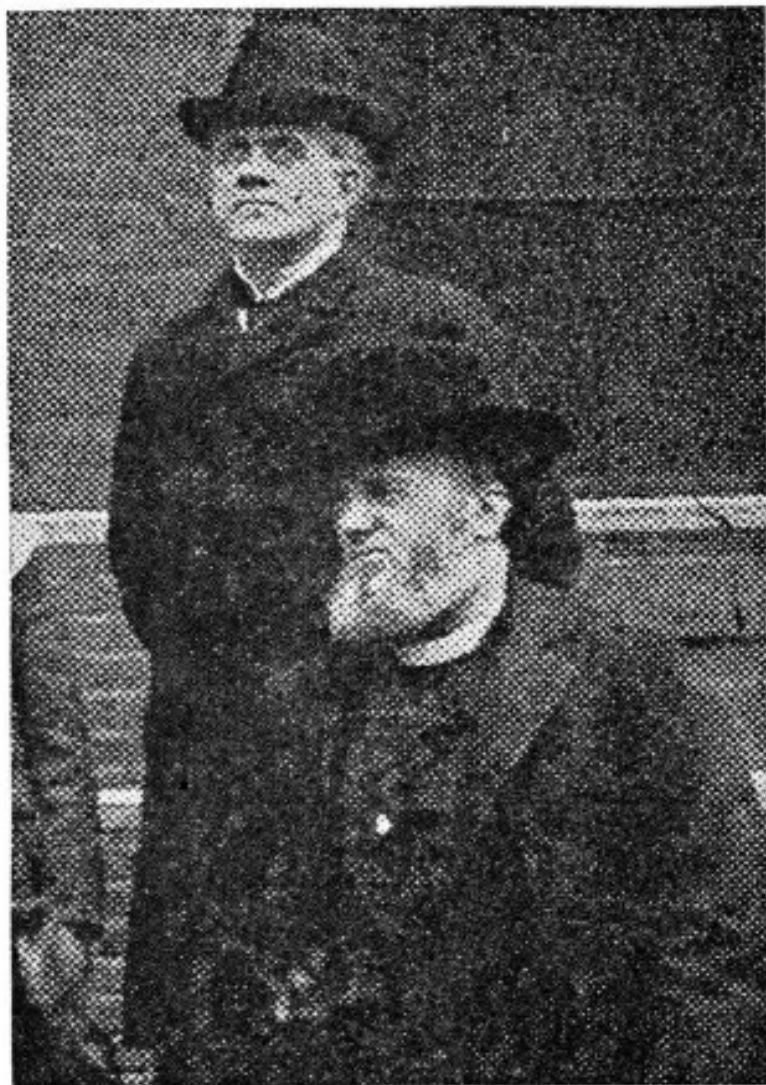
Rt. Rev. Daniel Joseph Ryan



Rev. William H. O'Brien



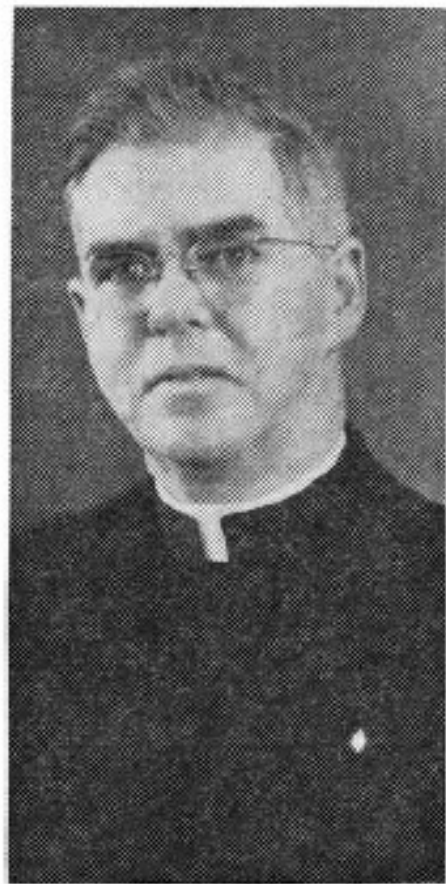
Rev. James Towers



Rev. Michael J. McCabe
Rev. James McCabe



Rev. Stephen Howard



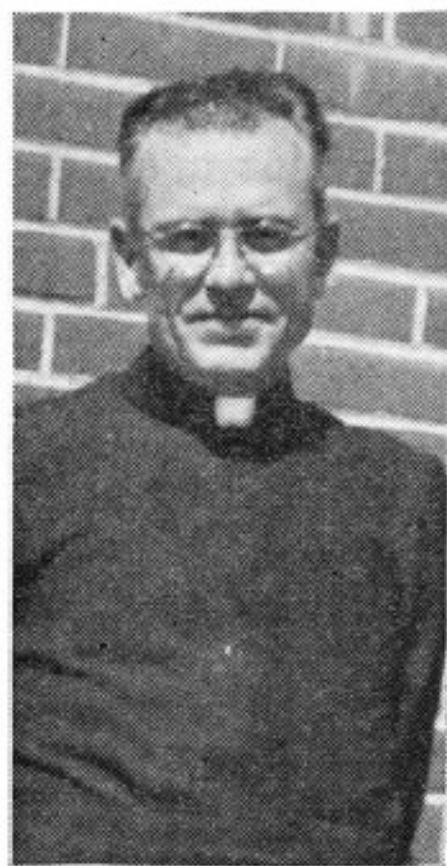
Rev. J. A. Murray



Rev. Jerome F. Schutzbach



Rev. Edw. S. Filipiak



Rev. Joseph P. Kennedy



Rev. Michael P. Walsh



Rev. Michael J. Knecht



Rev. Thomas J. Hayes



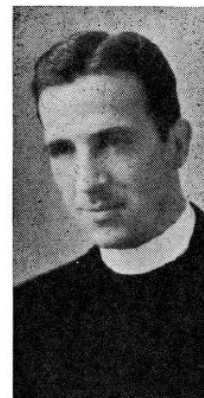
Rev. Robert M. Peet



Rev. Thos. J. Hederman

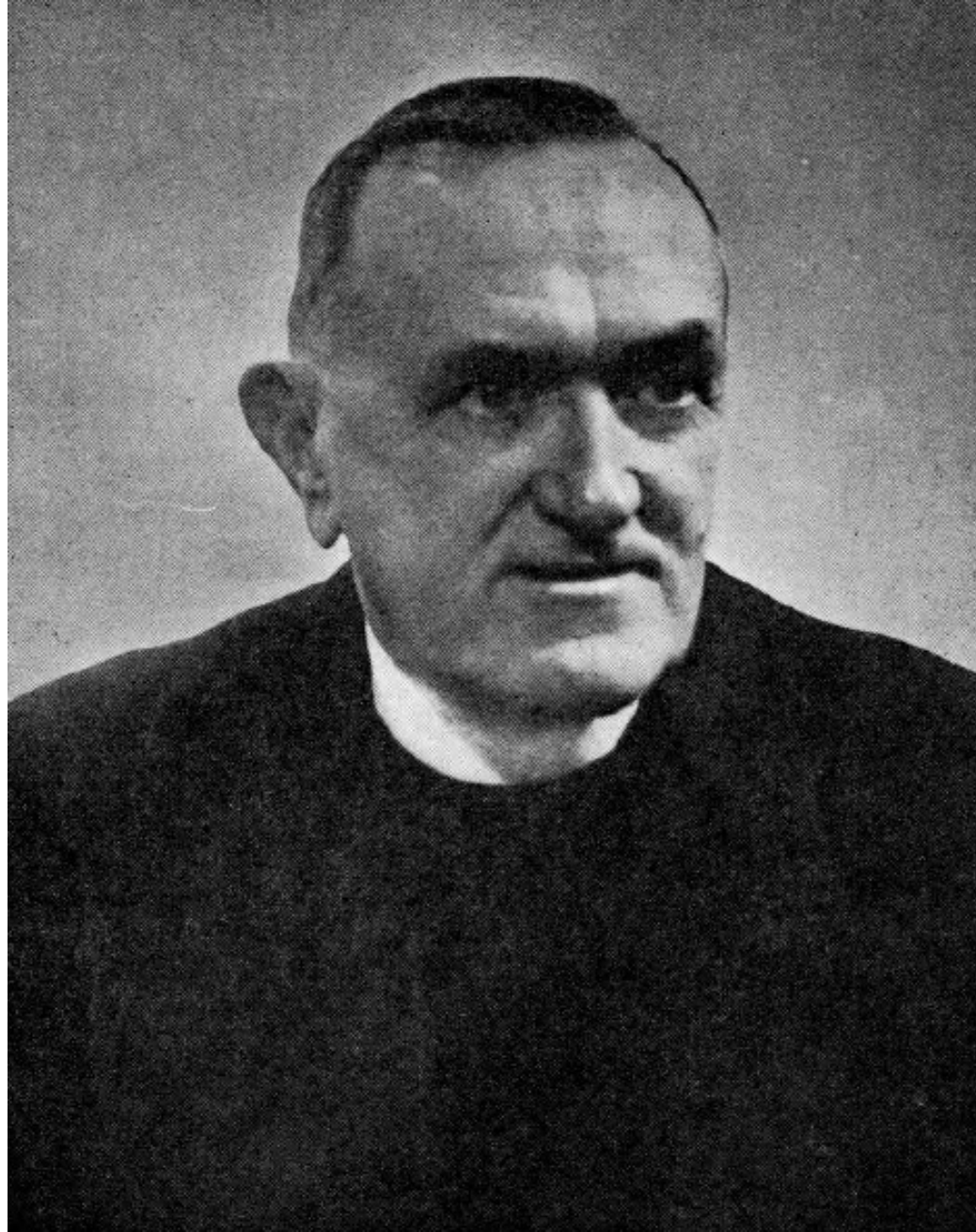


Rev. Francis J. O'Donnell



Rev. Glennon P. Flavin

Rev. Edward T. Walsh, Pastor of St. Michael's 1947, Archdiocesan Archives



St. Malachi's

Parish - Photographic
Materials - Saint Malachy
Church circa 1940

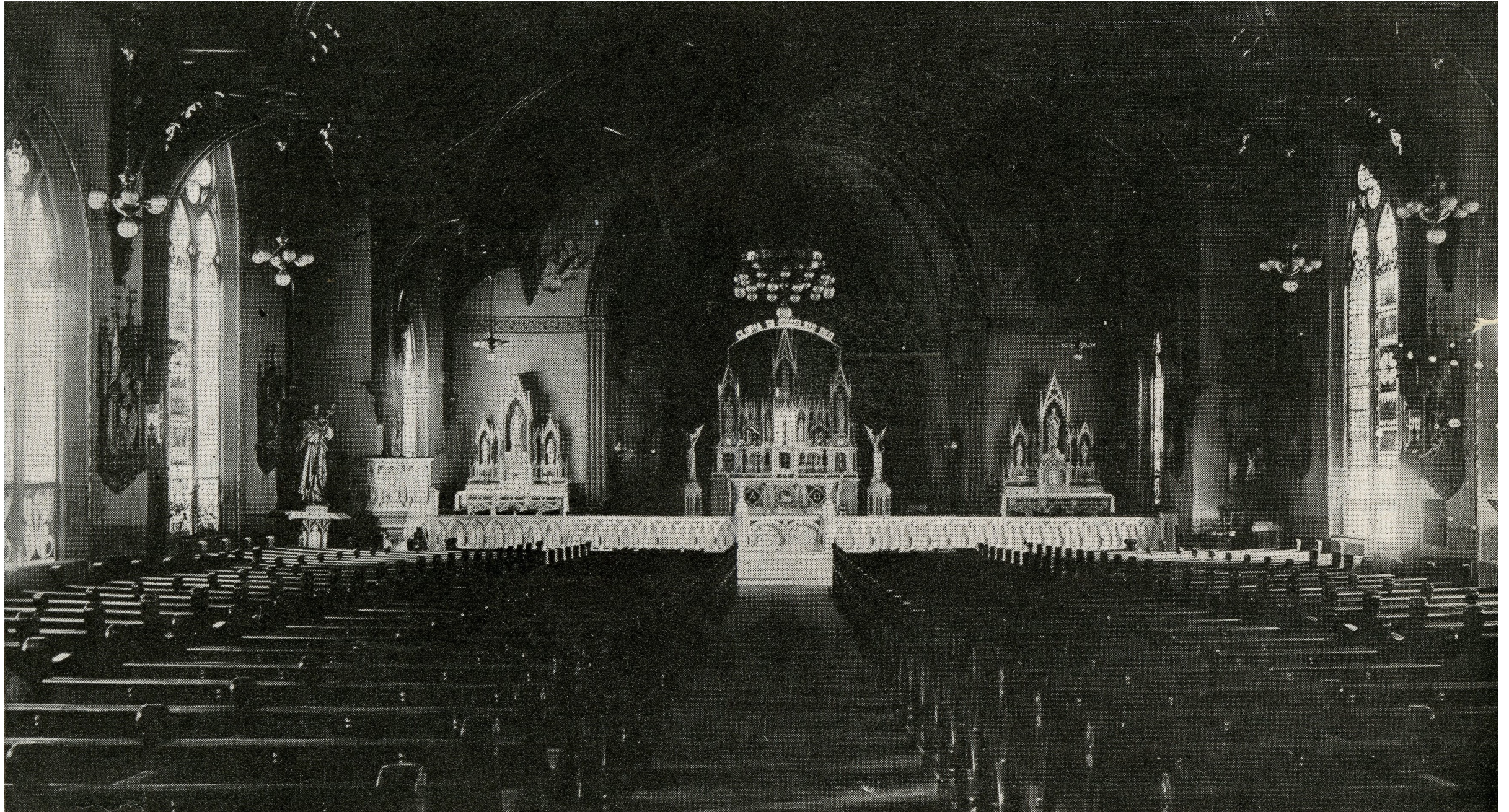


St. Leo's

St. Leo's, 1888,
Archdiocesan Archives



St. Leo's 1888, Archdiocesan Archives



St. Leo's, 1959, Archdiocesan Archives



St. Leo's Temperance
Hall, 2315 Mullanphy,
c. 1890, Missouri
History Museum,
P0017-00003



St. Columbkille's

Parish - Photographic Materials - Saint Columbkille Church circa 1900



Parish - Photographic
Materials - Saint
Columbkille Exterior circa
1940



St. Columbkille's Catholic Church, Photograph by William Swekosky, 1952, Missouri History Museum, N05194



Interior of St. Columbkille's Catholic Church at 8202 Michigan Avenue, Photograph by Emil Boehl, 1890s, Missouri History Museum, N33510



Parish - Photographic Materials - Saint Columbkille Rectory circa 1940



Historical - Photograph - Saint Columbkille Bell tower circa 1940



Historical - Photograph - Saint Columbkille Shed circa 1940



St. James the Greater



© Chris Naffziger, St. Louis Patina



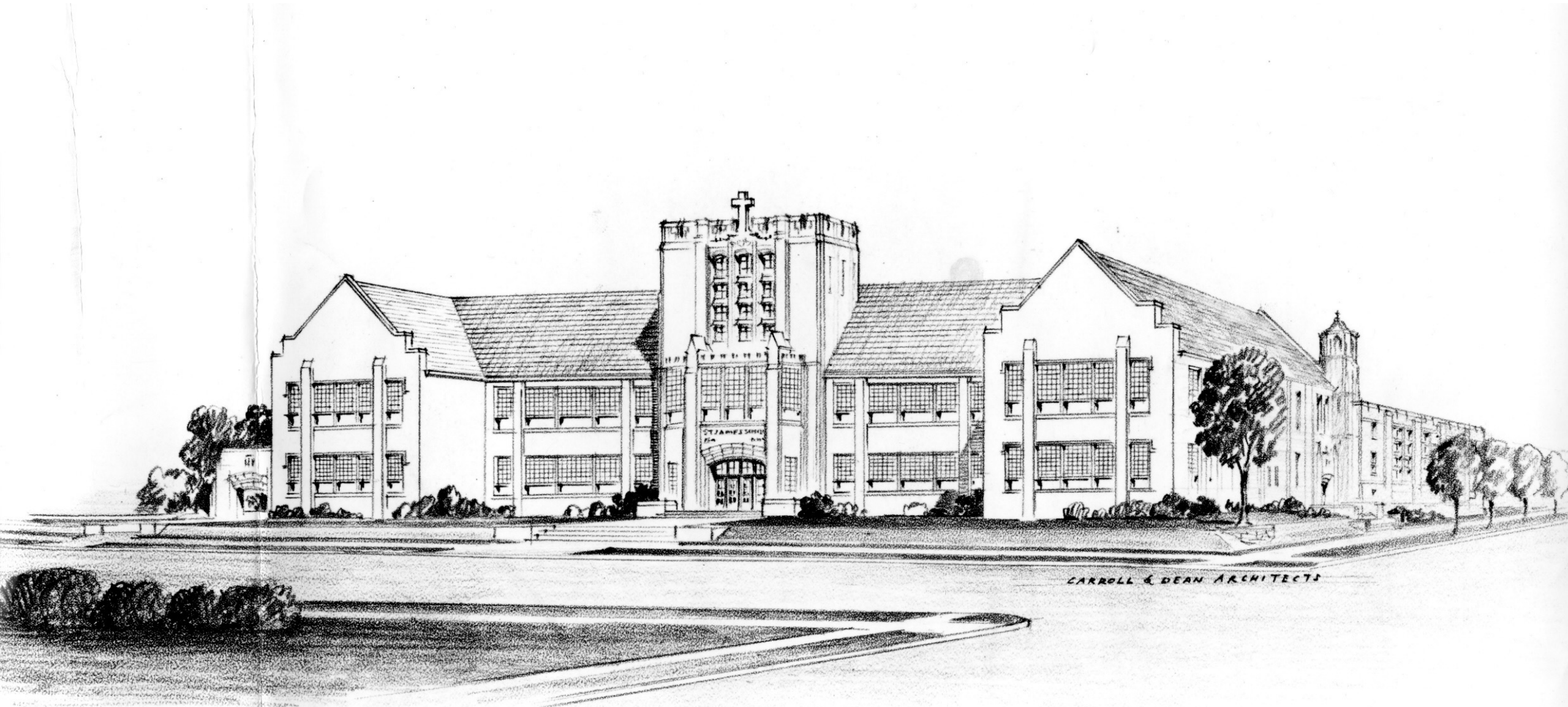
© Chris Naffziger, St. Louis Patina



Administrative - Publications - Photographic Materials - Saint James the Greater Parish, no date



Saint James the Greater - Saint Louis - School Architectural Drawing circa 1960



CARROLL & DEAN ARCHITECTS

Administrative -
Publications -
Photographic Materials -
Saint James the Greater
Parish school
construction, no date

