An aerial, black and white photograph of the St. Louis skyline, showing various skyscrapers and buildings. The image is used as a background for the text.

St. Louis history that doesn't get memorialized —  
but shouldn't be forgotten

# Unseen STL History

Featuring Amanda Clark & Jackie Dana

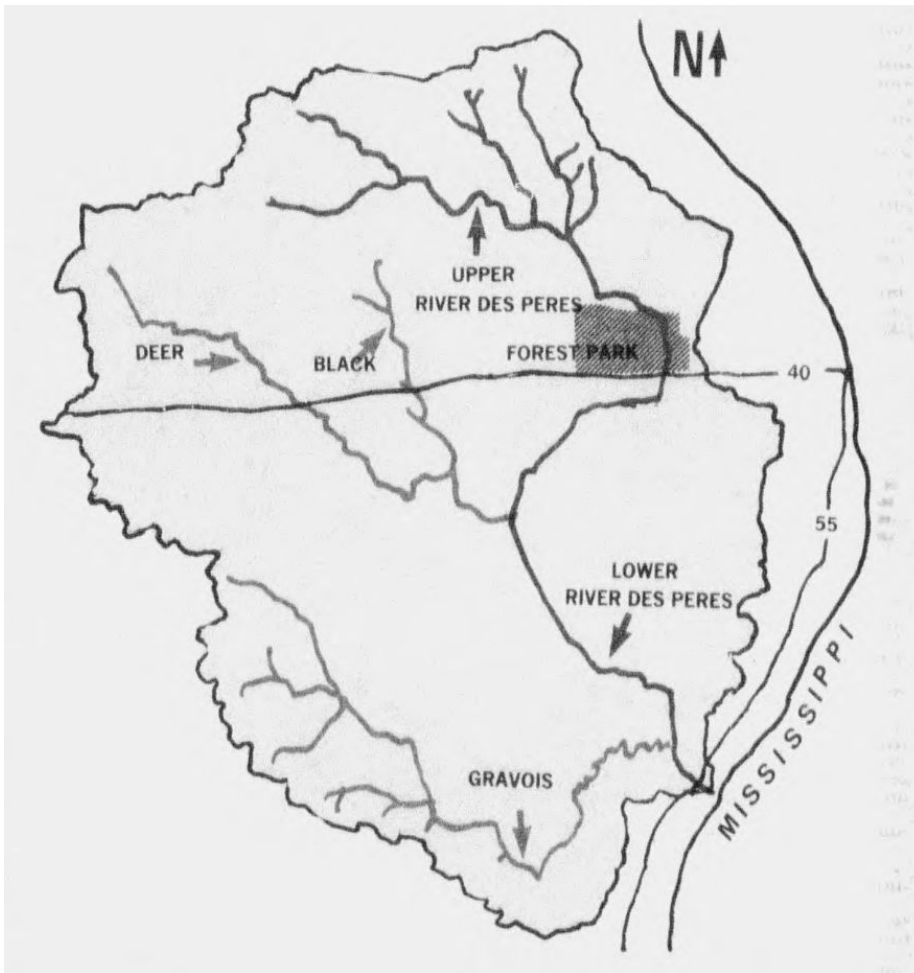
# River Des Peres & Cheltenham

Jackie Dana

How all this began



# The River Des Peres



River Des Peres and  
tributaries





River Des Peres  
near Skinker and  
Delmar, 19th c.



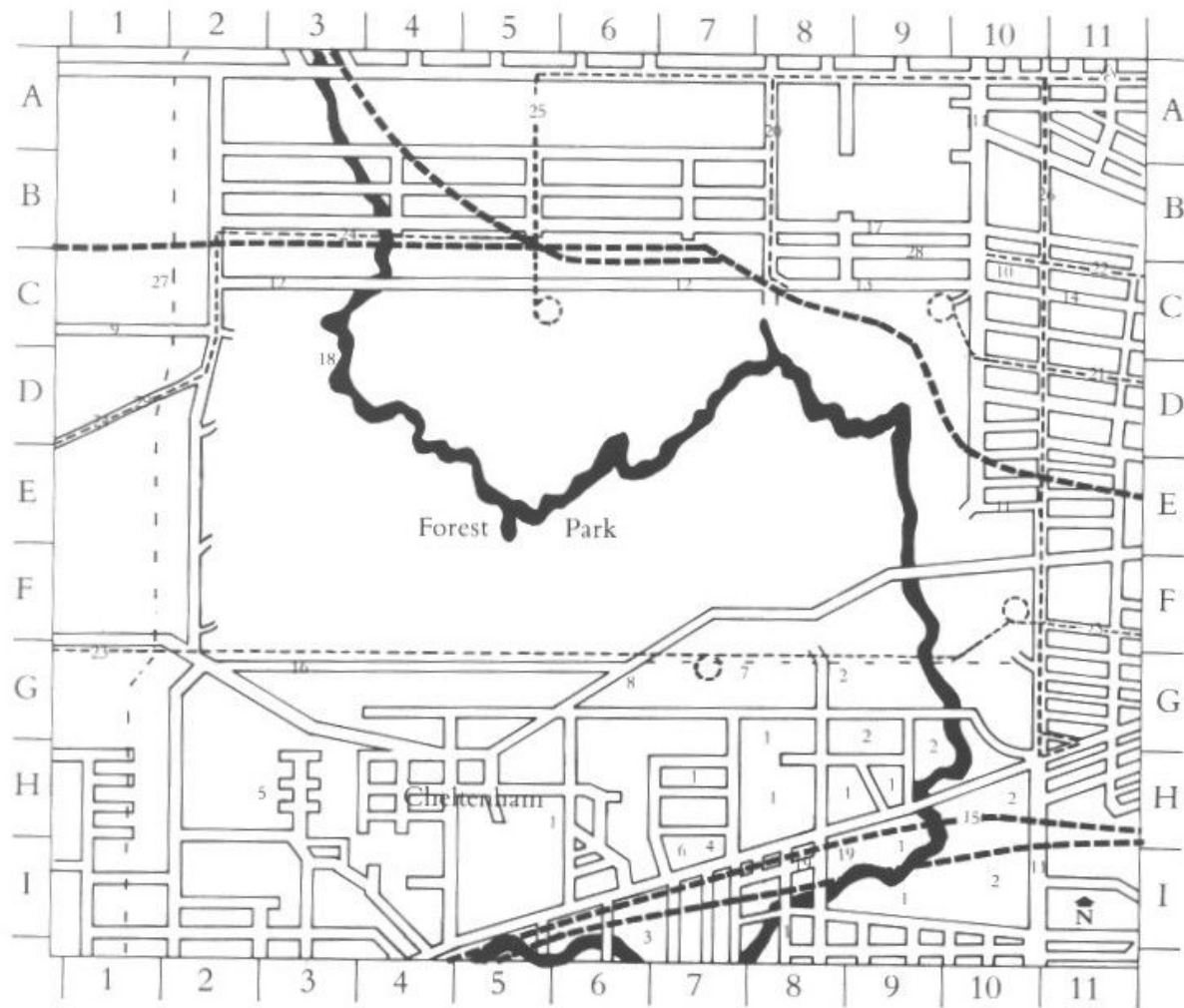


Bridge over River  
Des Peres at  
Delmar



Bridge over River  
Des Peres at  
Alabama

The River Des Peres,  
Forest Park and  
The World's Fair





Building the  
1904 World's  
Fair channel



River Des  
Peres flooding  
in Forest Park,  
1915



Flooding at  
Jefferson  
Memorial,  
1915

# Channelizing the River





Creating new tunnel  
for River Des Peres  
south of Oakland/  
Forest Park





River Des Peres  
tunnel at  
Kingshighway



River Des Peres tunnel along Lindell



Adding rip rap  
from Rock Hill  
Quarries to River  
Des Peres, 1920s





View of River  
Des Peres under  
Forest Park

Cheltenham



'late 97.

S. James Church

Billion Mansion

Manchester Road

Laclede Christy

Sulphur Springs  
Hotel

Howard Station

Mitchell Clay

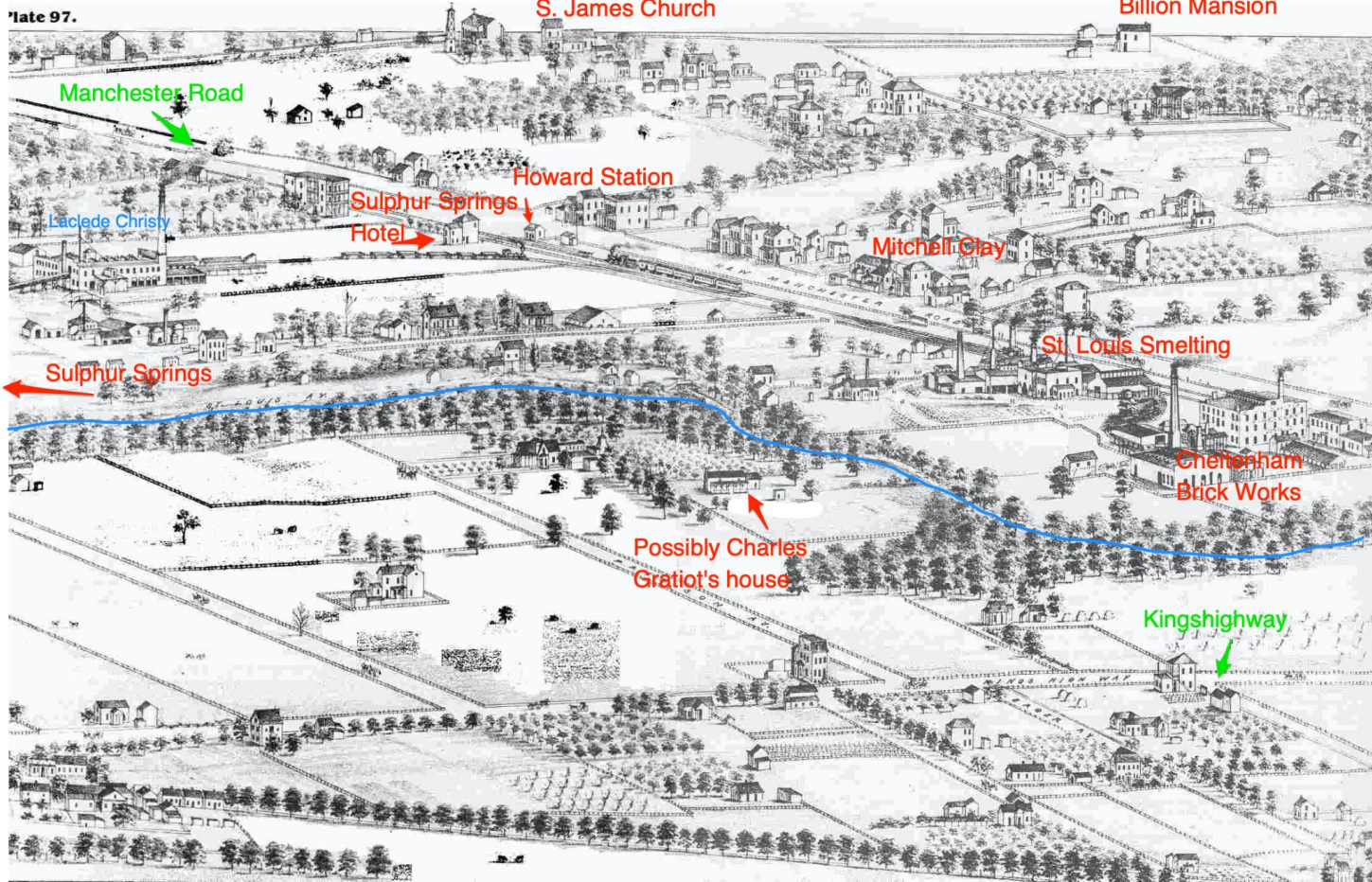
Sulphur Springs

St. Louis Smelting

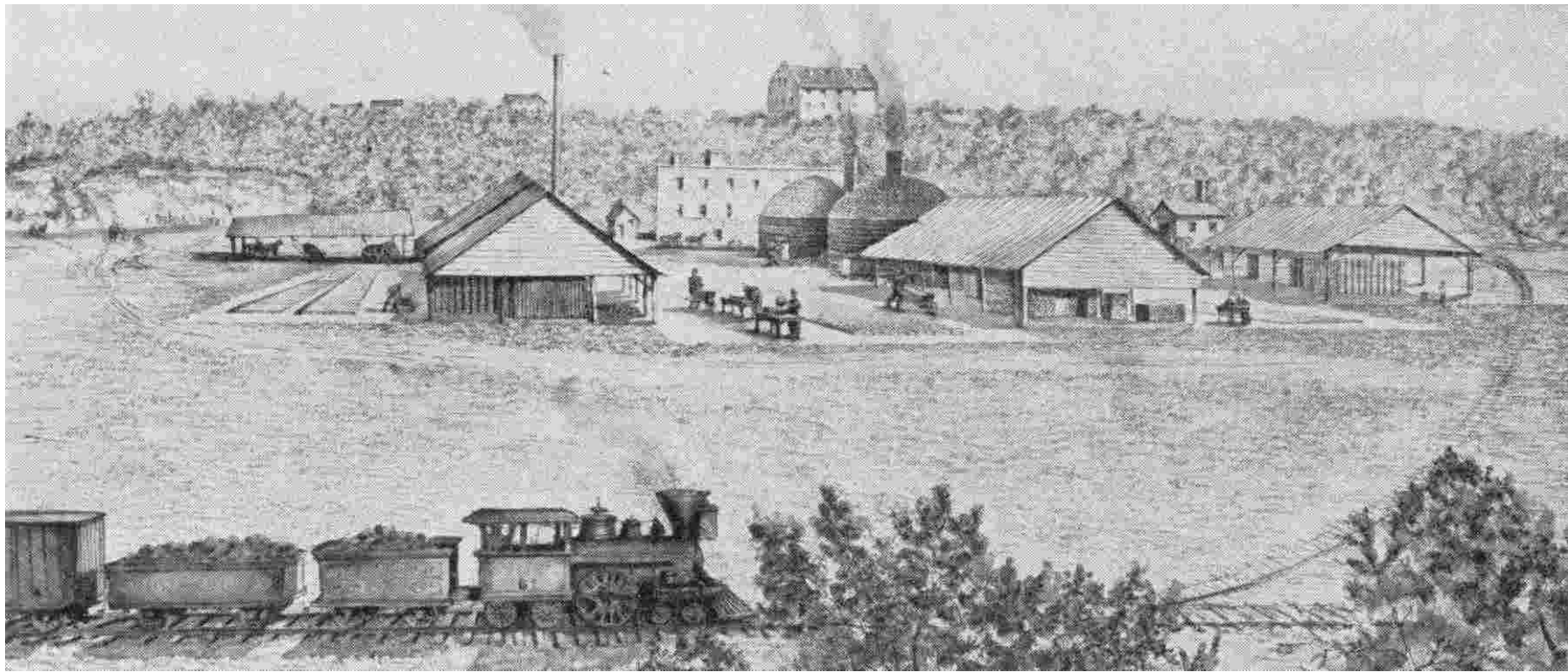
Cheltenham  
Brick Works

Possibly Charles  
Gratiot's house

Kingshighway



Sketch of  
Cheltenham,  
1875



Laclede Brick Company, 1854



Laclede-Christy, 19th century



Laclede Christy  
with River Des  
Peres

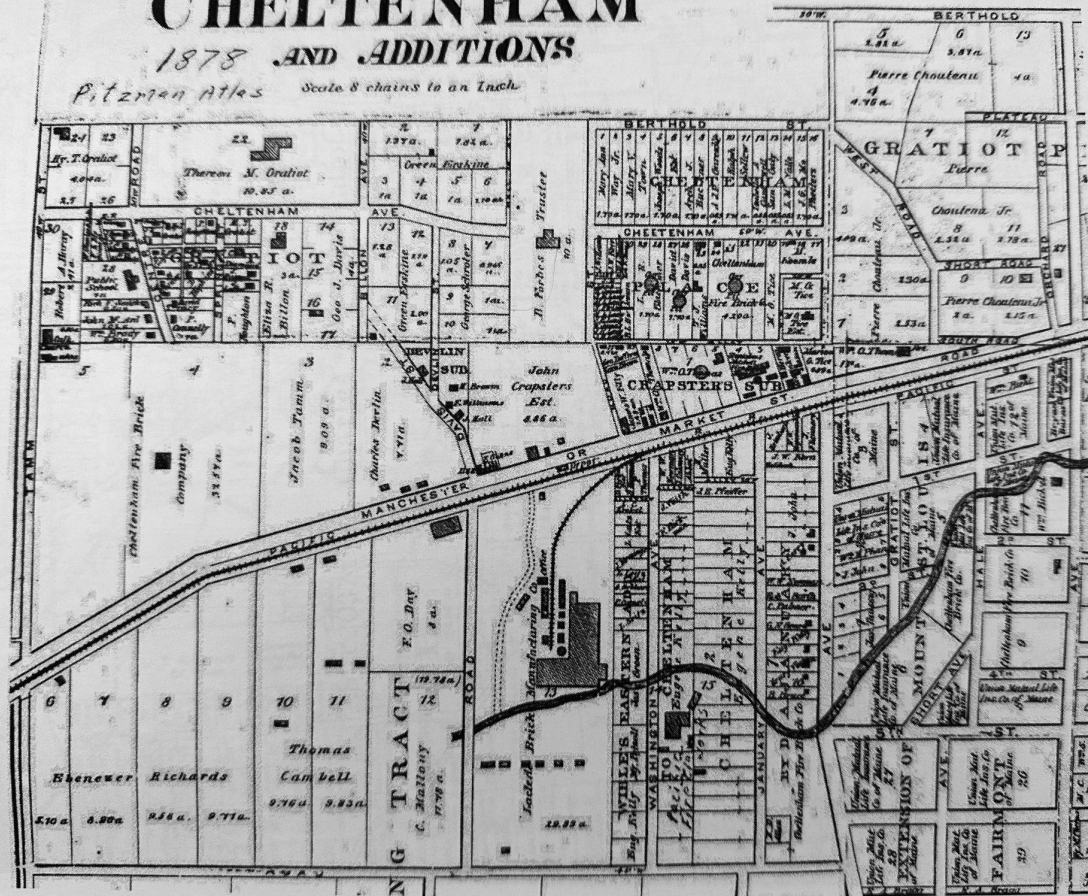


Cheltenham train  
station

# CHELTENHAM

1878 AND ADDITIONS

Pitman Atlas Scale 8 chains to an Inch



Cheltenham, 1878  
Laclede-Christy  
already in business  
south of Manchester,  
but notice the  
route of the river.



Laclede-Christy  
bridge

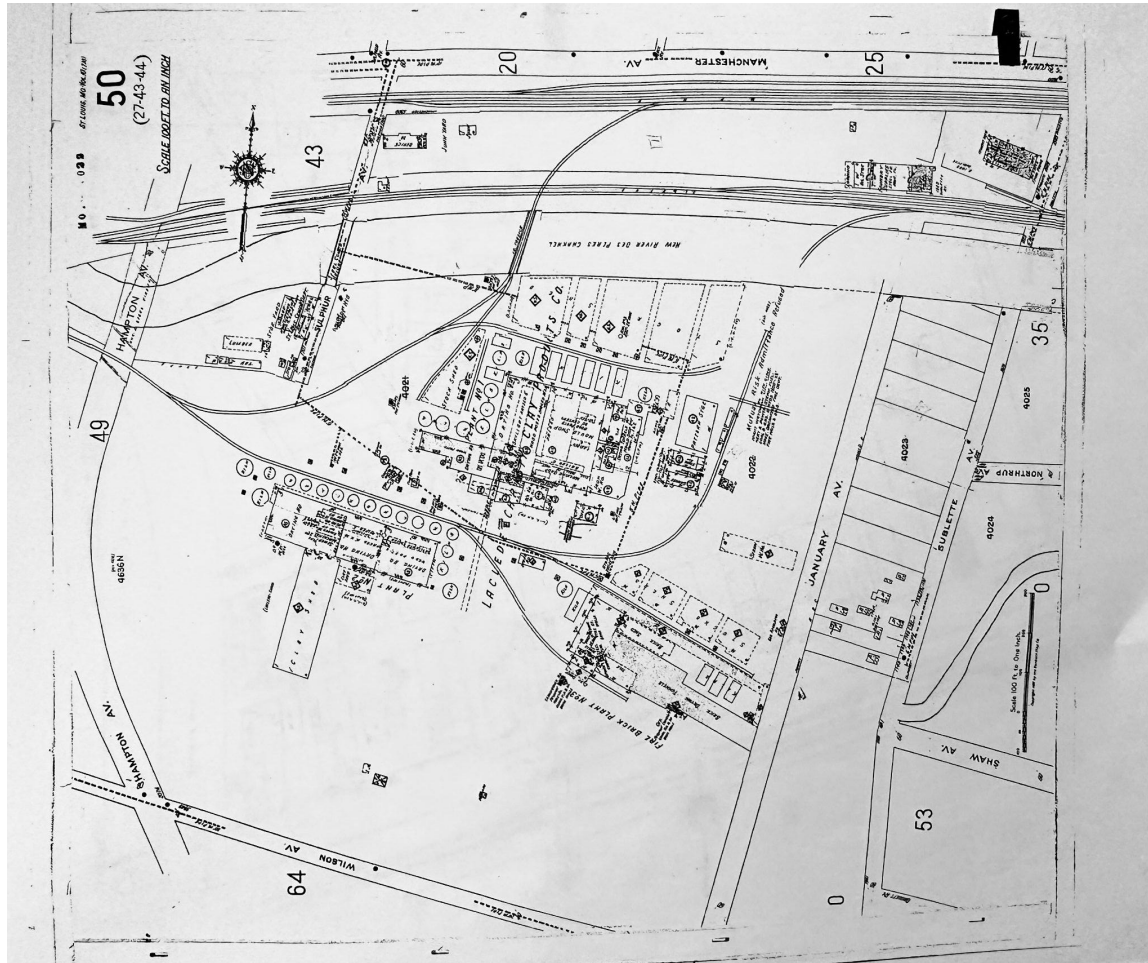


Another  
Laclede-Christy  
bridge





1915



## Laclede-Christy plant, 1926

Note that this is just after channelization of the river, which now runs parallel to the train tracks - both Pacific and Frisco (and Manchester Rd. at the top).



Map of clay and coal mines, after 1925.

Green: Hampton

Pink:

Kingshighway

Yellow:

Manchester

Aqua: River Des

Peres

Red circle: bridge  
to Laclede-Christy



Pipe Clay

{ Sandstone  
Roof

{ Fire Clay

Entrance to the Fire Clay Mine of the Laclede Sewer Pipe Company,  
showing the sandstone roof and the beds of pipe clay above it.



Italian and  
African-American  
clay workers



Examples of Laclede-Christy sewer pipe (NBAC)



Examples of  
terracotta  
ornamentation  
(manufacturer  
unknown)

(NBAC)



The end



Thank you!