

Ellis Wainwright, Charles Ramsey & Louis Henry Sullivan

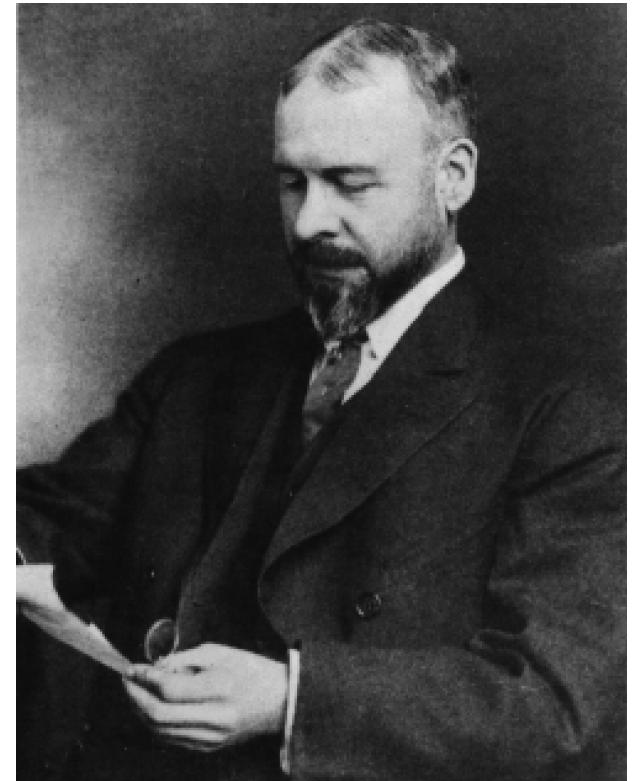
St. Louis' Contribution to Sullivan's Most Productive
Years of Modern American Architecture 1890 - 1896



Ellis Wainwright



Charles Ramsey



Louis Sullivan

St. Louis 1875-1889

Downtown Development



Typical St. Louis Architecture – 1880's



Commonwealth Bank



Mechanics – America Bank



Odd Fellows Building

Ellis Wainwright

- President Wainwright Brewery 1876
- President St. Louis Brewery Association 1889
- President National Breweries Association 1891
- President Kinloch Telephone Company
- One of 9 incorporators of St. Louis Jockey Club
- Member of the World's Fair Committee of 200
- Director Suburban Railroad Association
- Trustee St. Louis Museum of Fine Art
- Trustee St. Louis Public Library
- Self-taught Art Connoisseur, Studied Summers in Europe 1876-1889
- Bequeathed His Art Collection to St. Louis Art Museum 1924



Ellis & Charollete Wainwright

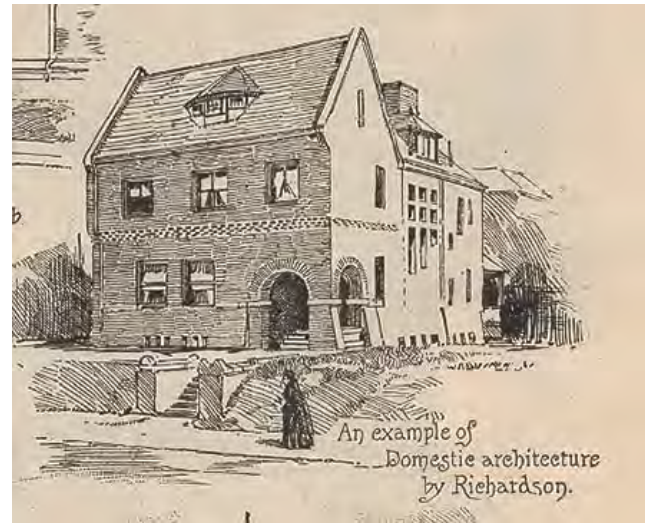
Home at 3645 Delmar

Designed by Ramsey & Swasey



Ellis Wainwright

Home at 3645 Delmar



An example of
Domestic architecture
by Richardson.

H.H. Richardson's Issac Lionberger Residence



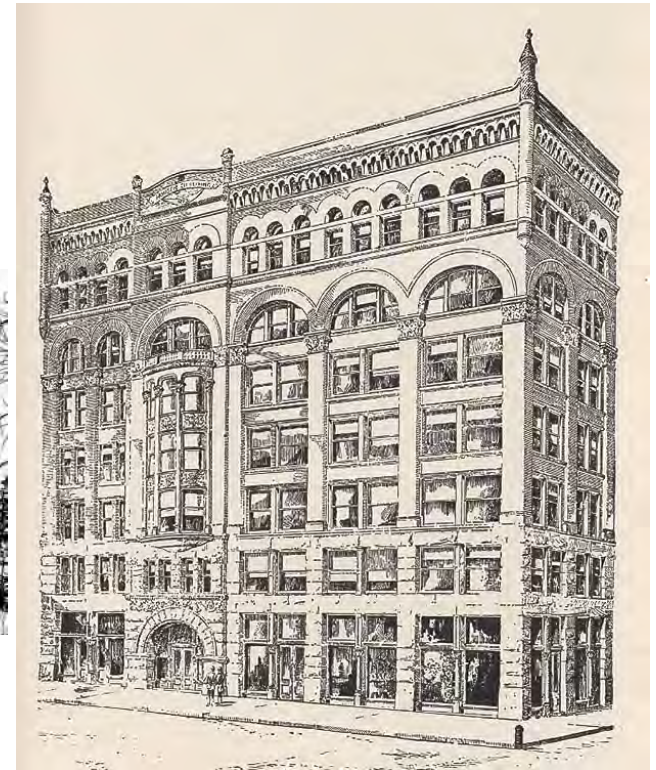
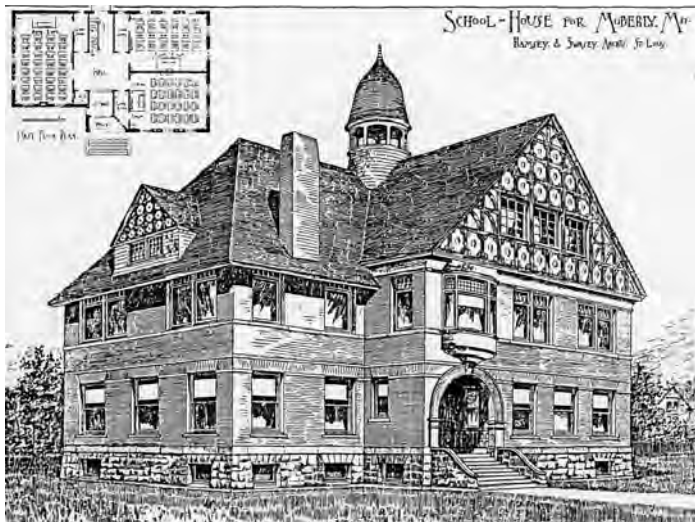
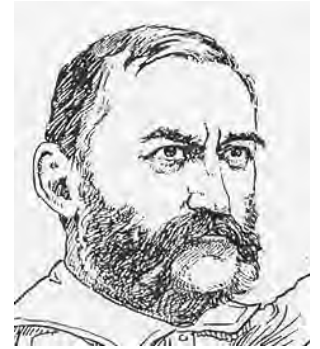
1915 Wainwright Residence



Northside of 3600 Block of Delmar

Charles Ramsey

- St. Louis Architect born in 1845.
- Attended Association of Western Architects Convention in Chicago – 1886.
- President of Missouri State Association of Architects – 1888.
- Founding member St. Louis Chapter AIA – 1890.
- Formed partnership with Adler & Sullivan for all St. Louis work.

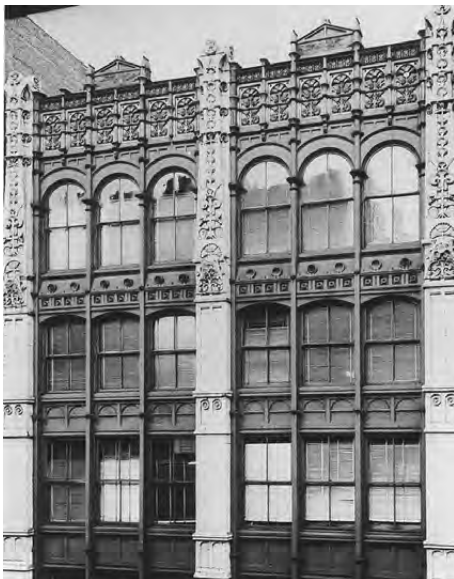
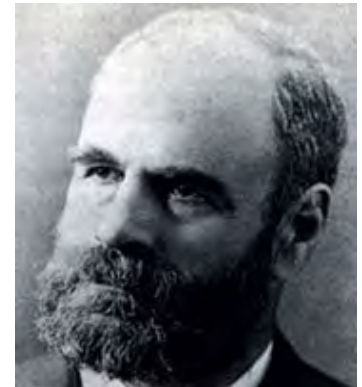


1885 Western Architect Association Convention in St. Louis, Sullivan & Ramsey



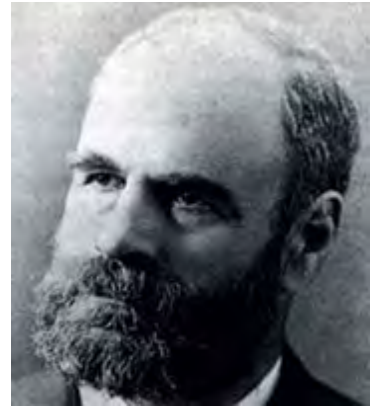
Louis Sullivan

- Born in Boston - 1856
- Studied Architecture at MIT - 1872
- Interned with Frank Furness in Philadelphia - 1873
- Interned with William LeBaron Jenny in Chicago - 1873
- Studied Architecture at Ecole des Beaux-Arts - 1874
- Returned to Chicago in - 1875
- Worked for Dankmar Adler 1879-1882
- Became a partner with Adler 1883



Louis Sullivan

- Returned to Chicago in - 1875
- Worked for Dankmar Adler 1879-1882
- Became a partner with Adler 1883



Dankmar Adler



Borden Block 1880



Rothschild Bldg. 1881



Auditorium Building 1887-89

Chicago, Ill.



Louis Sullivan

Preliminary Scheme One 1886

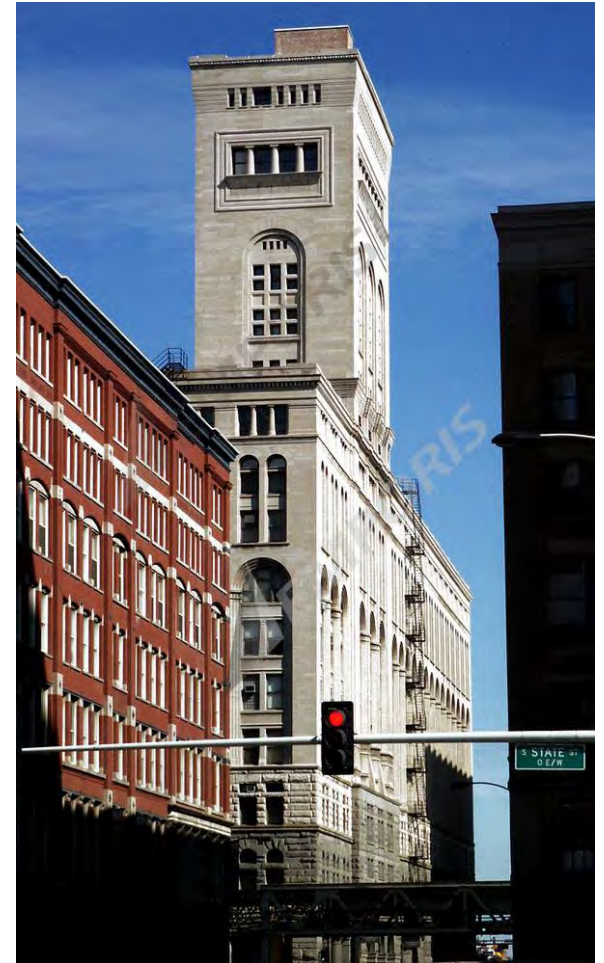


H.H. Richardson

Marshall-Fields Warehouse 1886

Auditorium Building 1887-89

Chicago, Ill.



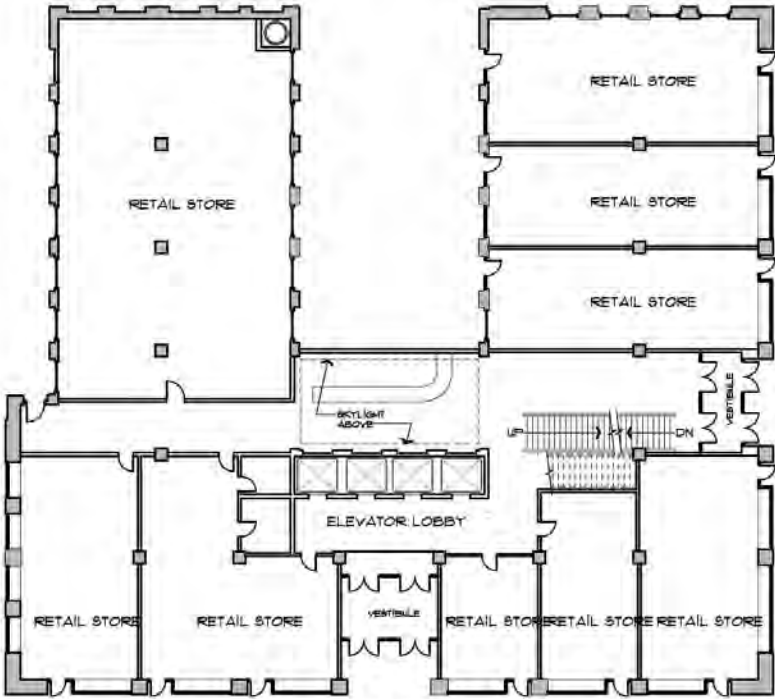
Wainwright Building 1890

St. Louis

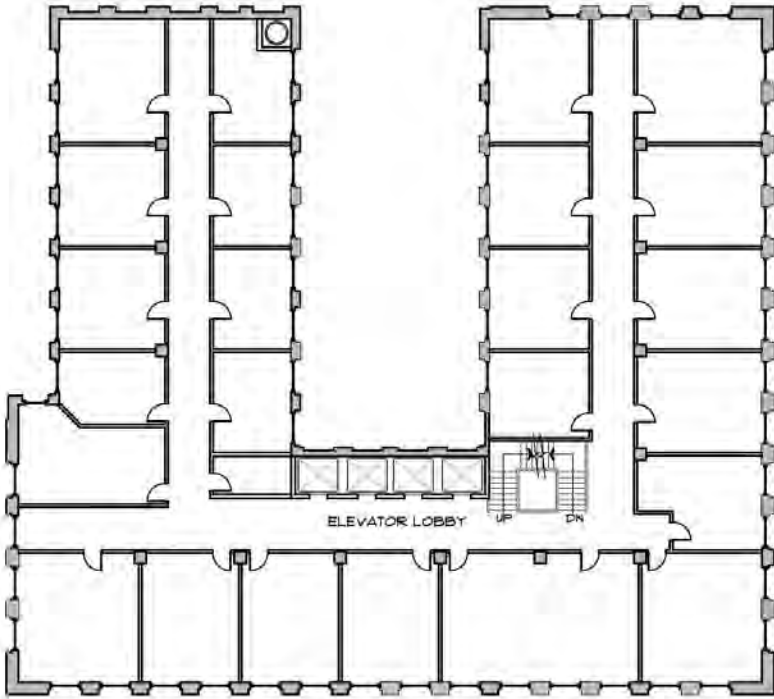


Wainwright Building 1890

St. Louis



FIRST FLOOR PLAN
WAINWRIGHT BUILDING



TYPICAL UPPER FLOOR PLAN
WAINWRIGHT BUILDING

Wainwright Building 1890

St. Louis



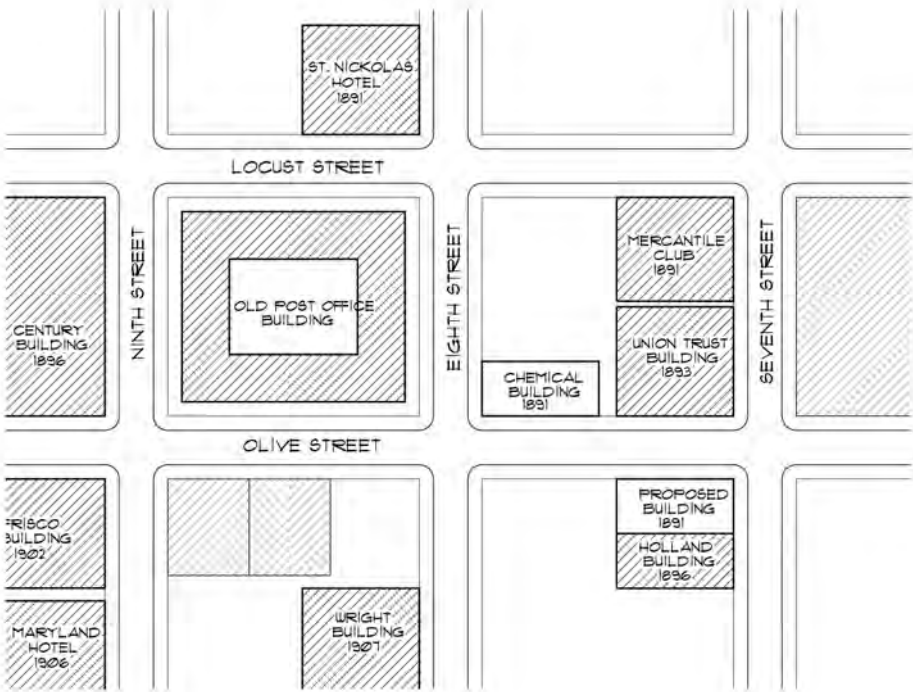
Getty Tomb 1890

Graceland Cemetery, Chicago



Mercantile Club Building

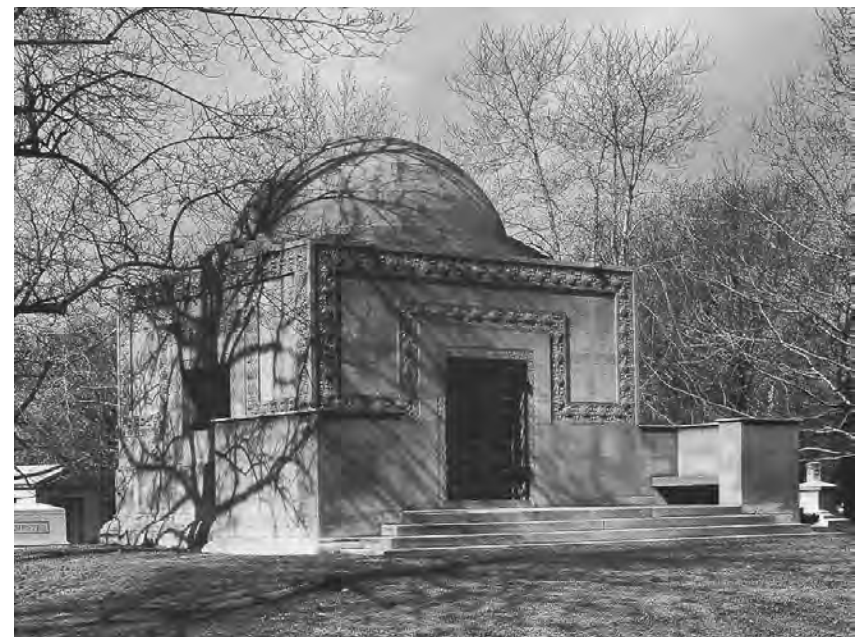
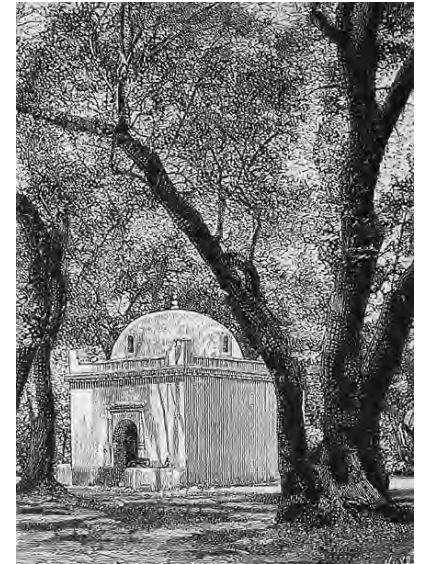
St. Louis



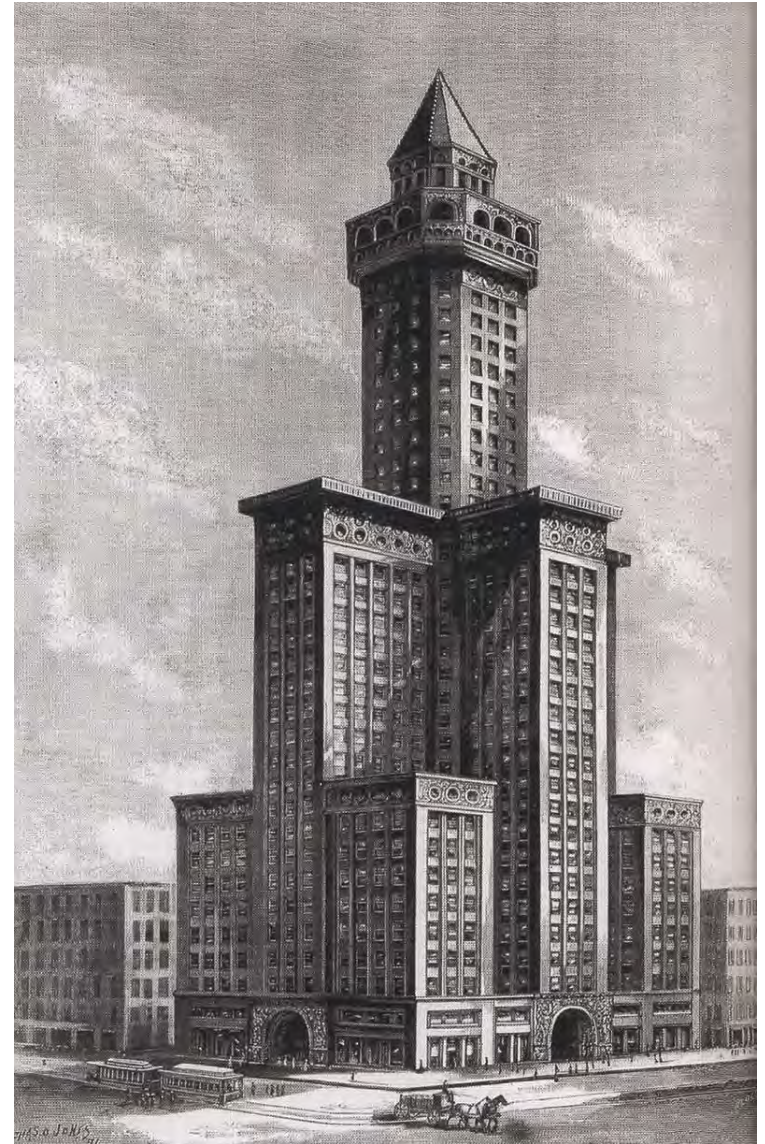
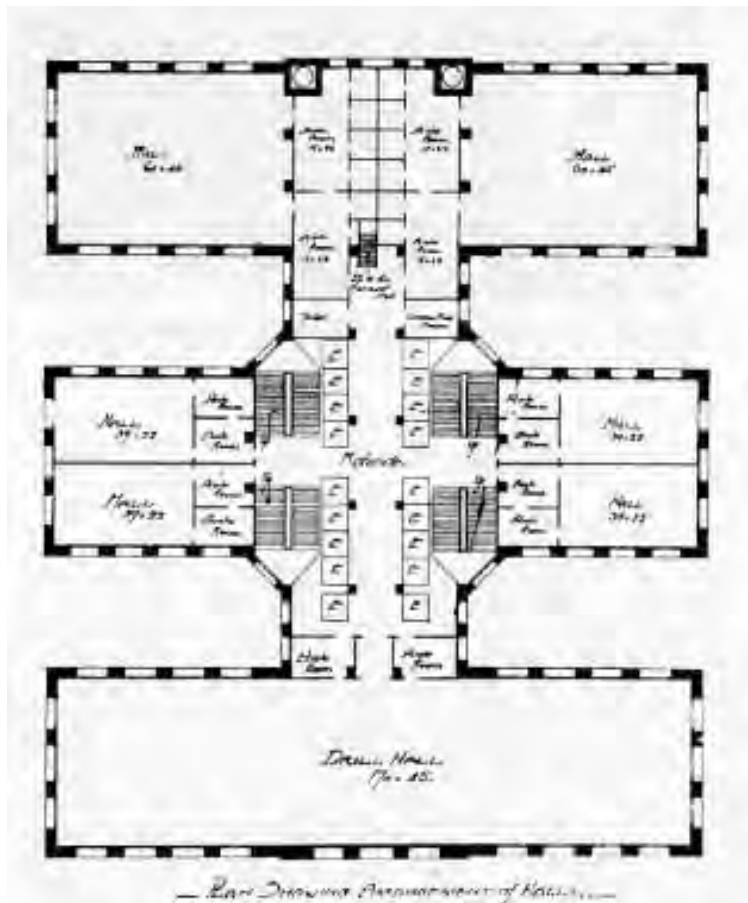
Mercantile Club Building Competition St. Louis



Wainwright Tomb 1891 Bellevue Cemetery St. Louis



Odd Fellow Temple 1891 Chicago, Ill.

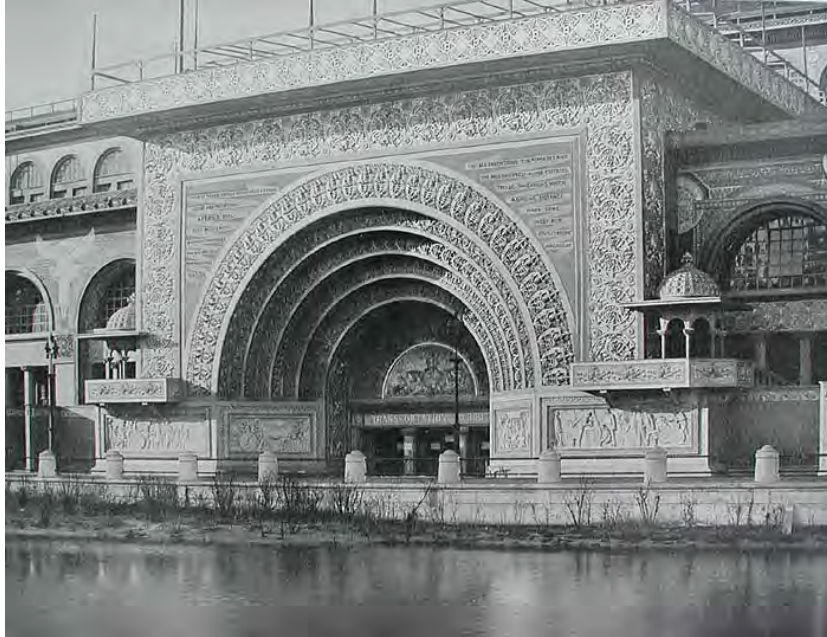


Transportation Building 1891 Columbia Exposition – Chicago, Ill.



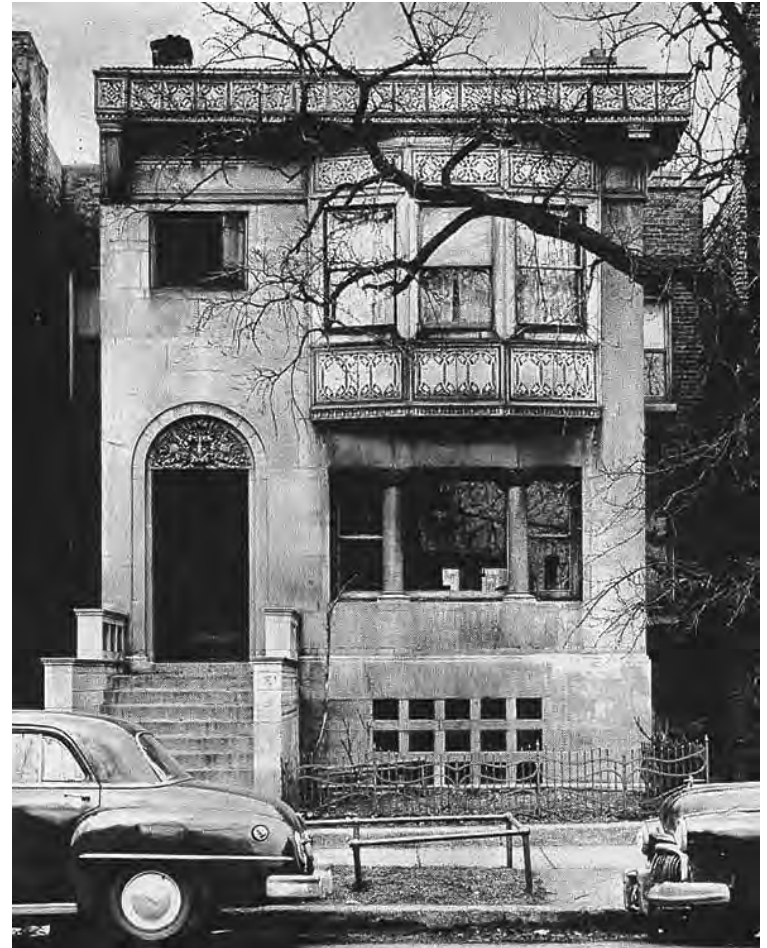
Transportation Building – 1893

Columbia Exposition – Chicago, Ill.



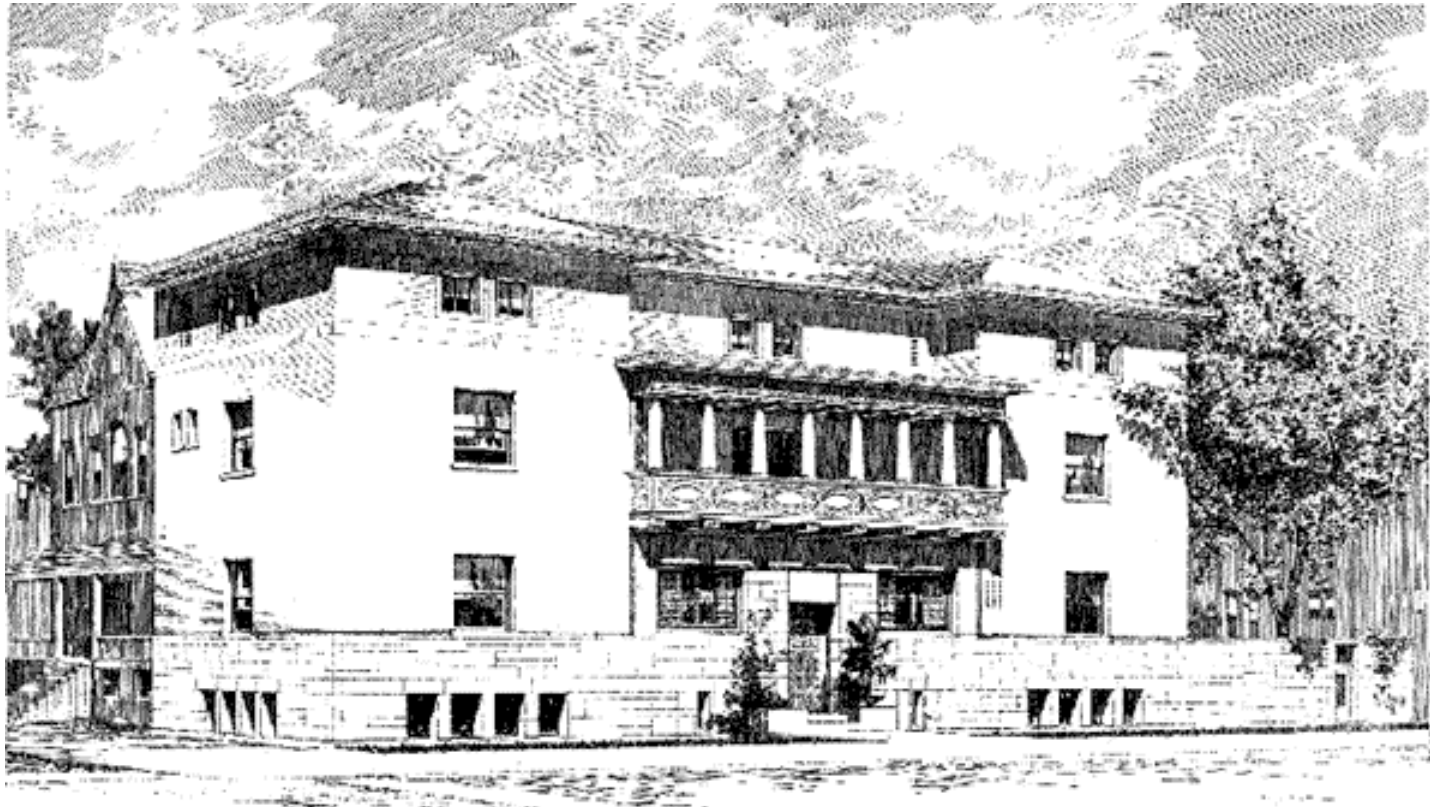
Sullivan Residence 1891

Chicago, Ill.



Charnley Residence 1891

Chicago, Ill.



Charnley Residence 1891

Chicago, Ill.



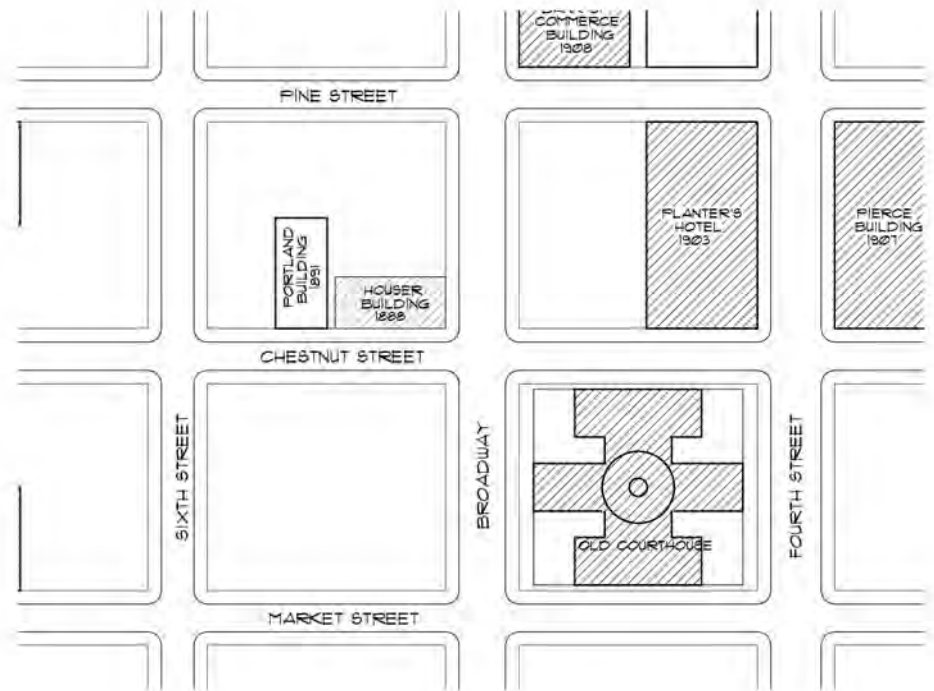
Schiller Building 1891

Chicago, Ill.



Portland Building Project 1892

St. Louis



St. Nickolas Hotel 1892

St. Louis



St. Nickolas Hotel

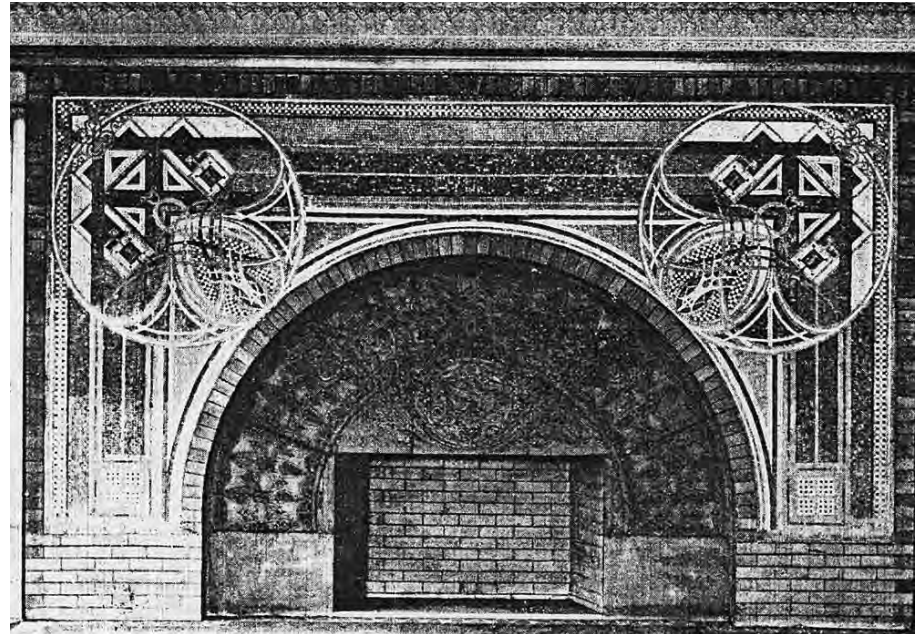
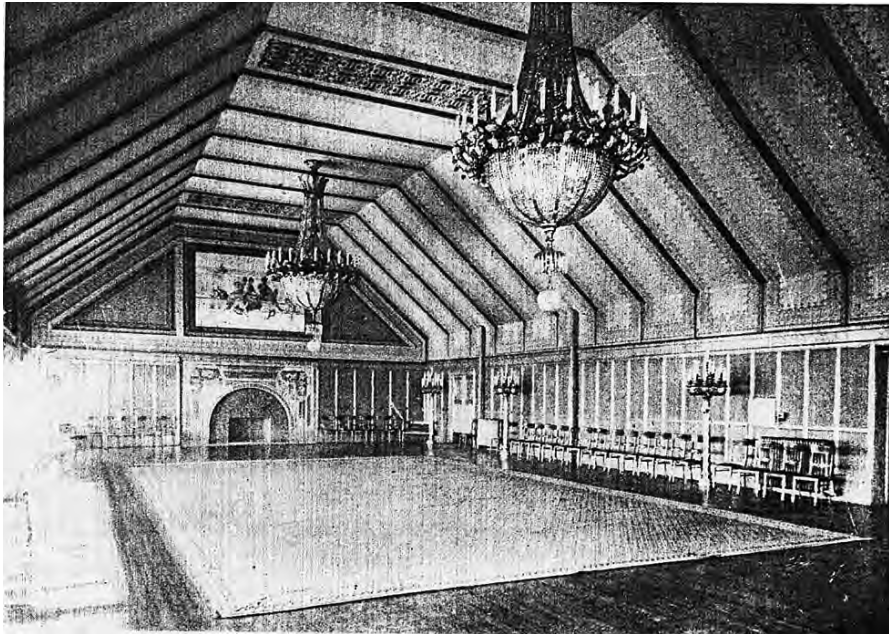


Victoria Building

St. Nickolas Hotel 1892

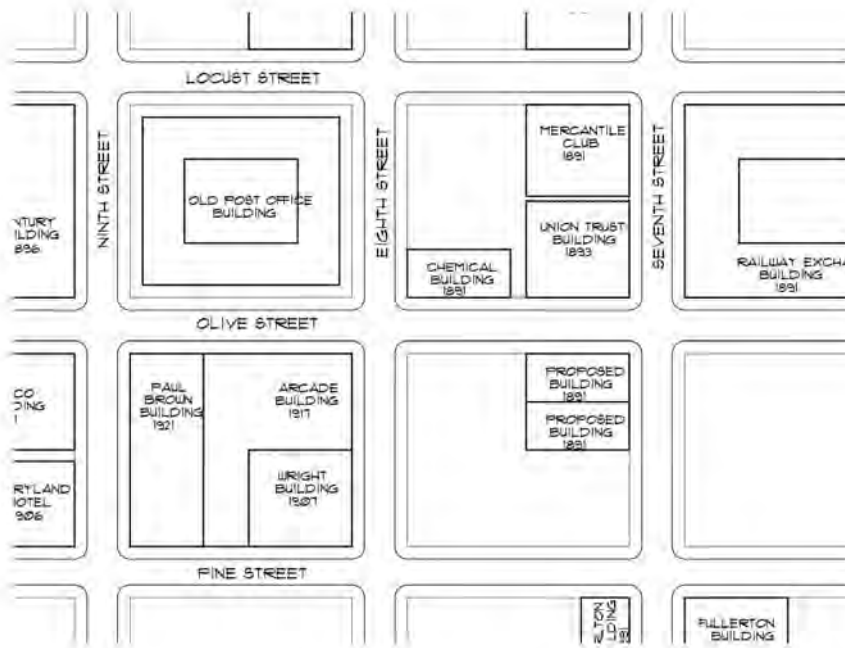
Site of 1895 AIA Convention

St. Louis



Trust and Savings Building Project Scheme 1 – 1892

St. Louis



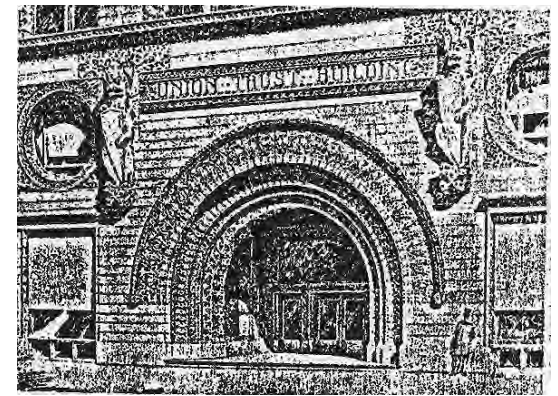
Union Trust Building 1893

St. Louis



Union Trust Building 1893

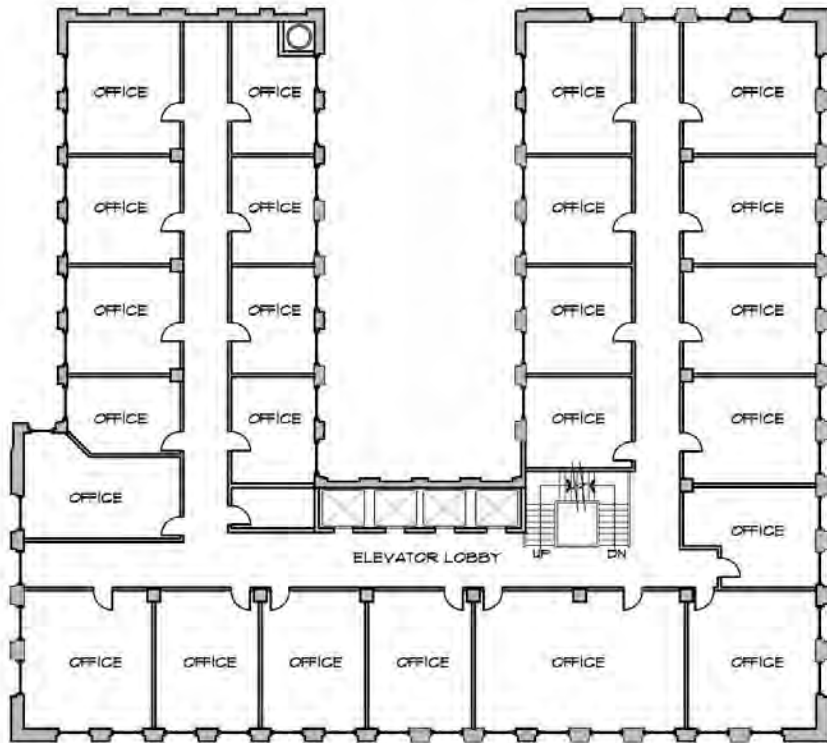
St. Louis



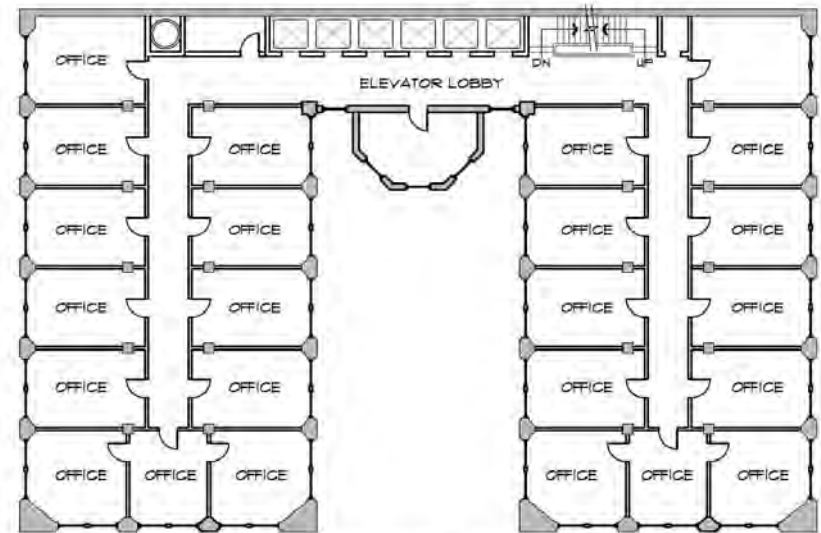
Wainwright Building 1890

Union Trust Building 1893

St. Louis



TYPICAL UPPER FLOOR PLAN
WAINWRIGHT BUILDING

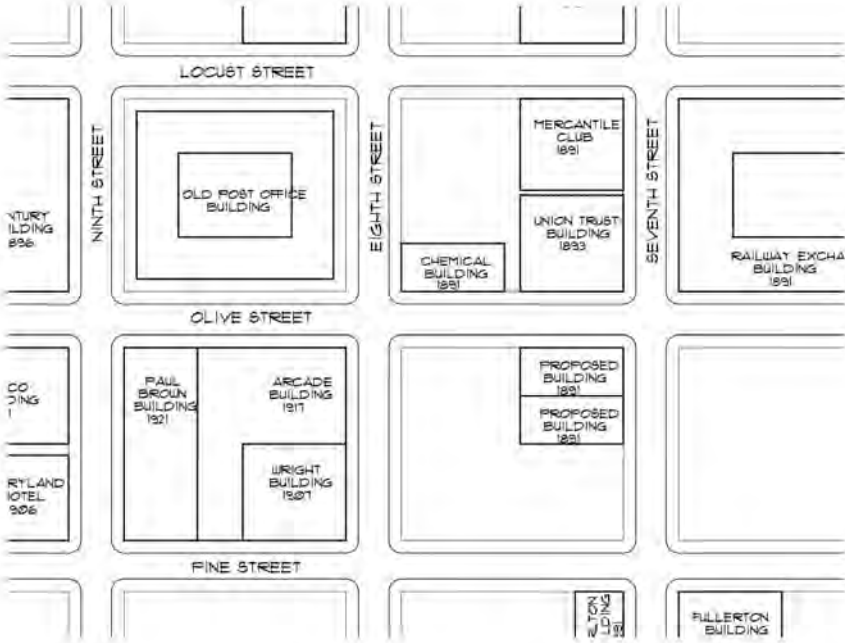


TYPICAL UPPER FLOOR PLAN
UNION TRUST BUILDING

Sullivan Bank Lions



Trust and Saving Building Project Scheme 2 - 1893

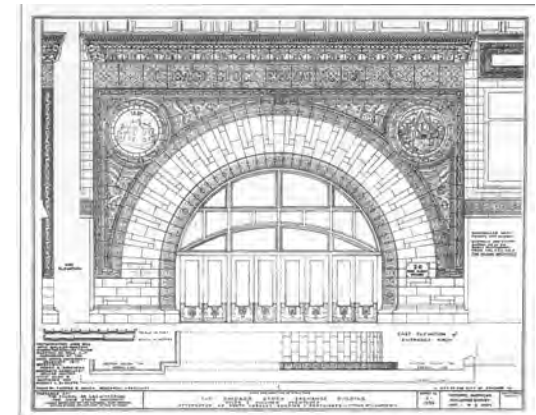
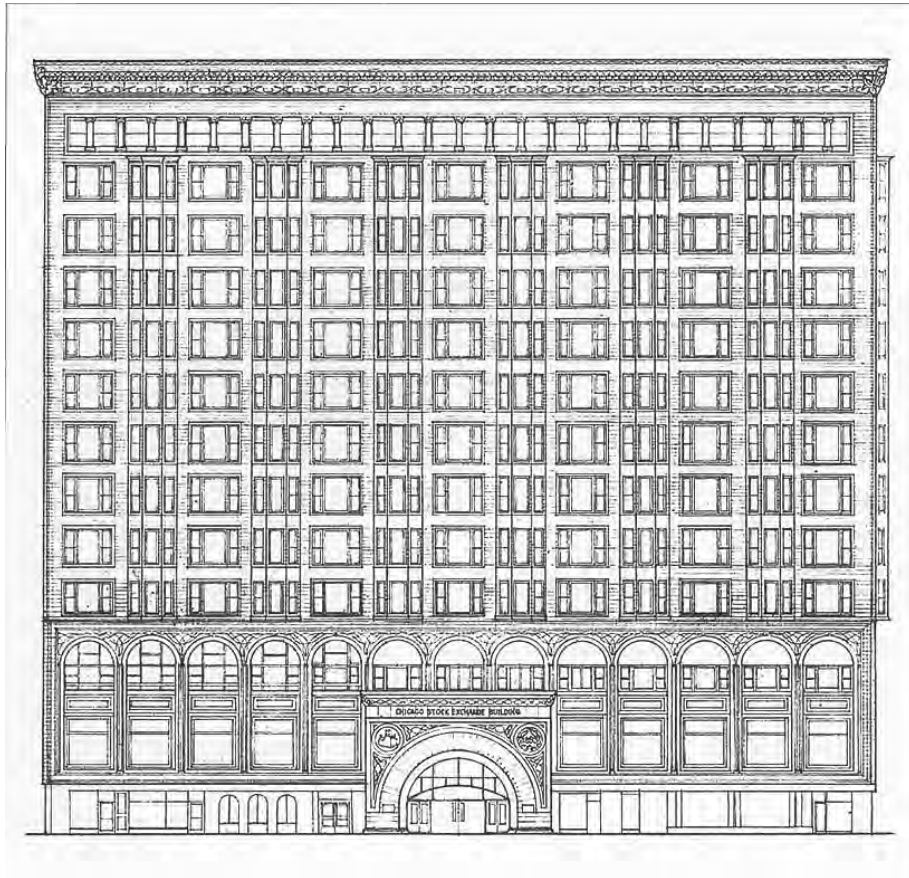


Stock Exchange Building 1893

Chicago, Ill.



Stock Exchange Building 1893 Chicago, Ill.



Wainwright Residence 1893

2914 Locust St. Louis



St. Louis Club Building – Prior to 1894

Wainwright Residence 1893

2914 Locust St. Louis



St. Louis Club Building – After 1894

Site of the St. Louis Club 2023

St. Louis, MO

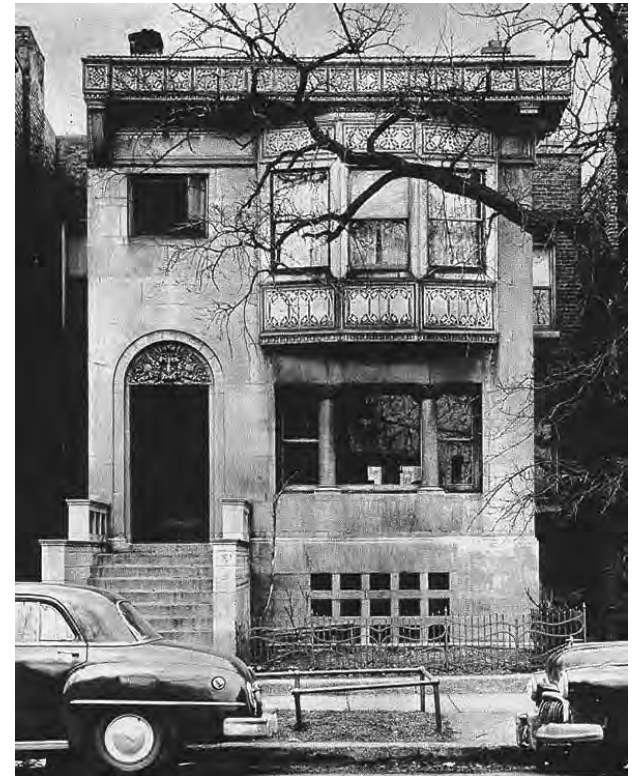


Wainwright Residence 1893

2914 Locust St. Louis



Wainwright Residence – St. Louis



Sullivan Residence - Chicago

Wainwright Residence 1893

2914 Locust St. Louis



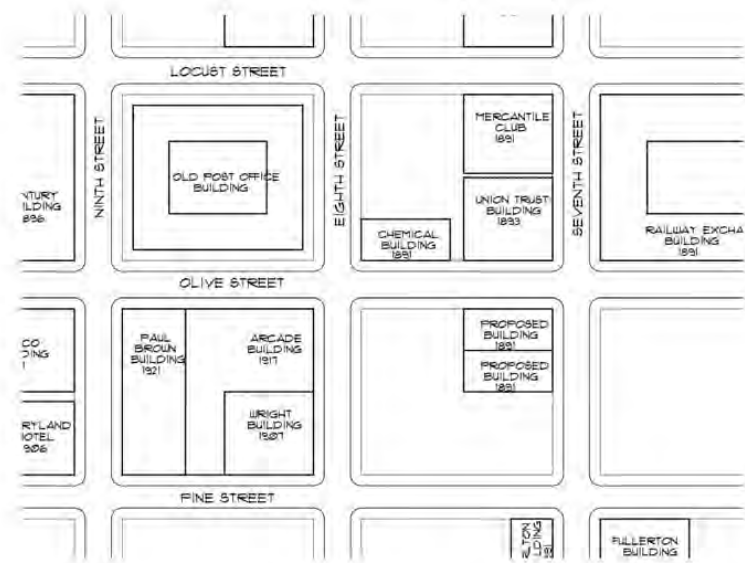
Enlargement of 2914 Locust



Charnley Residence

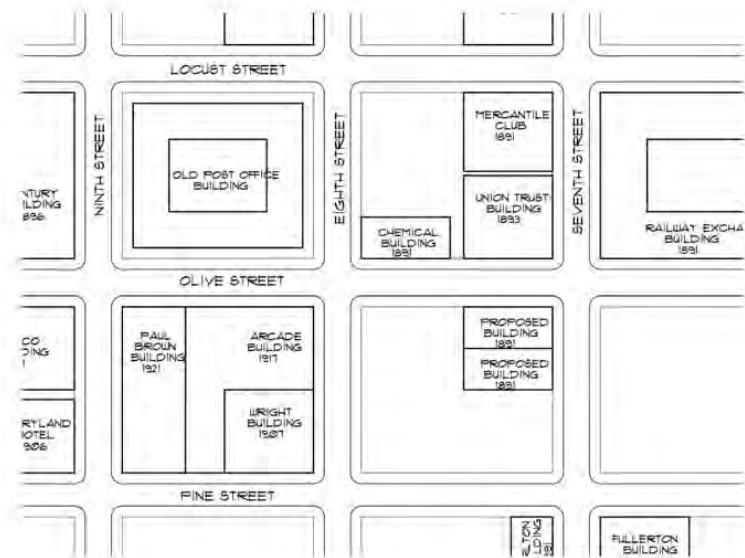
Chemical Bank Building Scheme 1 – 1894

St. Louis



Chemical Bank Building Scheme 2 – 1894

St. Louis



Office Building Project 1894

St. Louis



Guaranty Building 1894-95

Buffalo, NY.

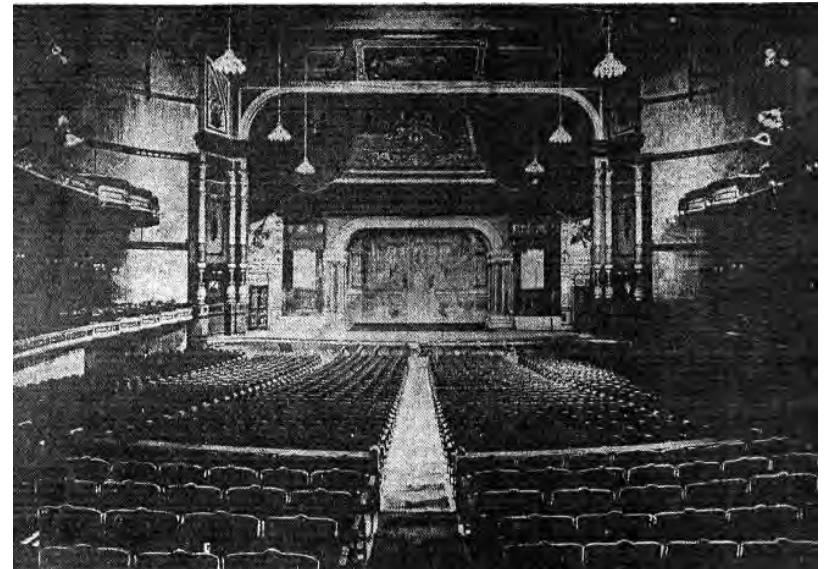


St. Louis Exposition and Music Hall 1897

Charles Ramsey – Architect

Louis Sullivan – Architect

St. Louis

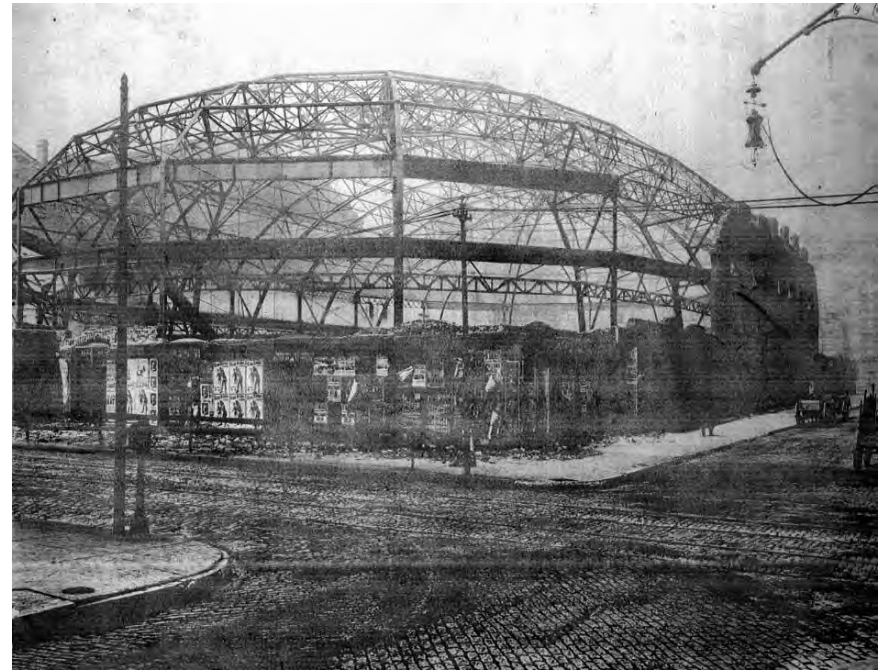
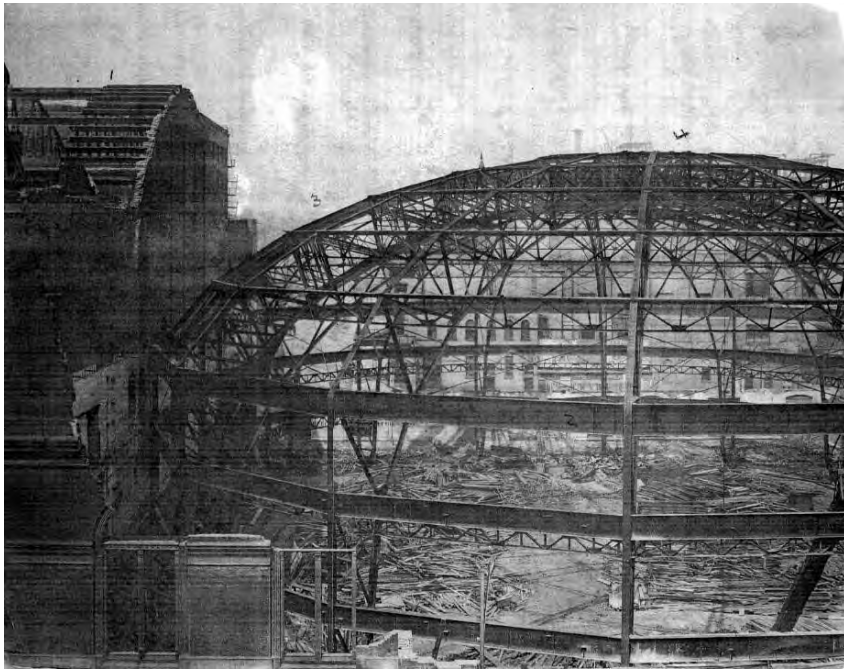


St. Louis Exposition and Music Hall 1897

Charles Ramsey – Architect

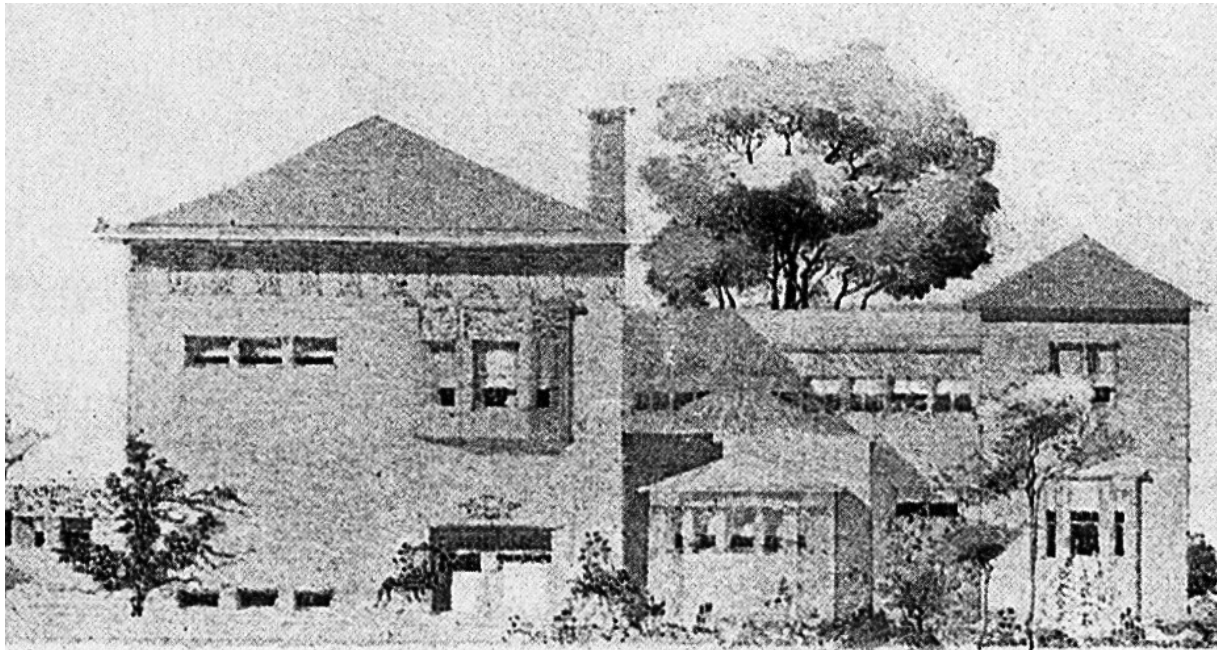
Louis Sullivan – Architect

St. Louis



Sullivan & Wainwright after 1900

- 1901 Ellis Wainwright hires Sullivan to design a new residence in St. Louis.
- Sullivan does preliminary design of house for Wainwright.
- 1902 Ellis Wainwright indicted for bribery, spends next nine years in Europe.
- Sullivan informs Wainwright he can't repay loan for \$10,000.
- 1911 Ellis Wainwright returns to USA, is cleared of all charges.



Louis Sullivan

Died 1924 in Chicago



Ellis Wainwright

Died 1924 in St. Louis



Sullivan's work 1890 - 95

1890 - 92 Frank Lloyd Wright is Sullivan's chief draftsman during this period.

1892 Adler and Sullivan form a partnership with Charles Ramsey for all St. Louis Projects. Shared office space in the Hauser Building at 509 Chestnut St.

1893 - Sullivan and Wright go their separate ways due to Wright's 'moonlighting'.

1895 - St. Louis Chapter A I A 3rd Annual Exhibition – “Adler, Sullivan and Ramsey, Chicago & St. Louis”

1895 – Adler leaves the firm to take a position with Crane Elevator Company.

10 projects in St. Louis, more than any other city outside of Chicago . (4 Built, 6 Unbuilt)

Sullivan quote from “The Tall Building Artistically Considered.”

“..and thus the design of the tall office building takes its place with all other architectural types made when architecture, as happened once in many years, was a living art. Witness the Greek temple, the gothic cathedral, the mediaeval fortress.”