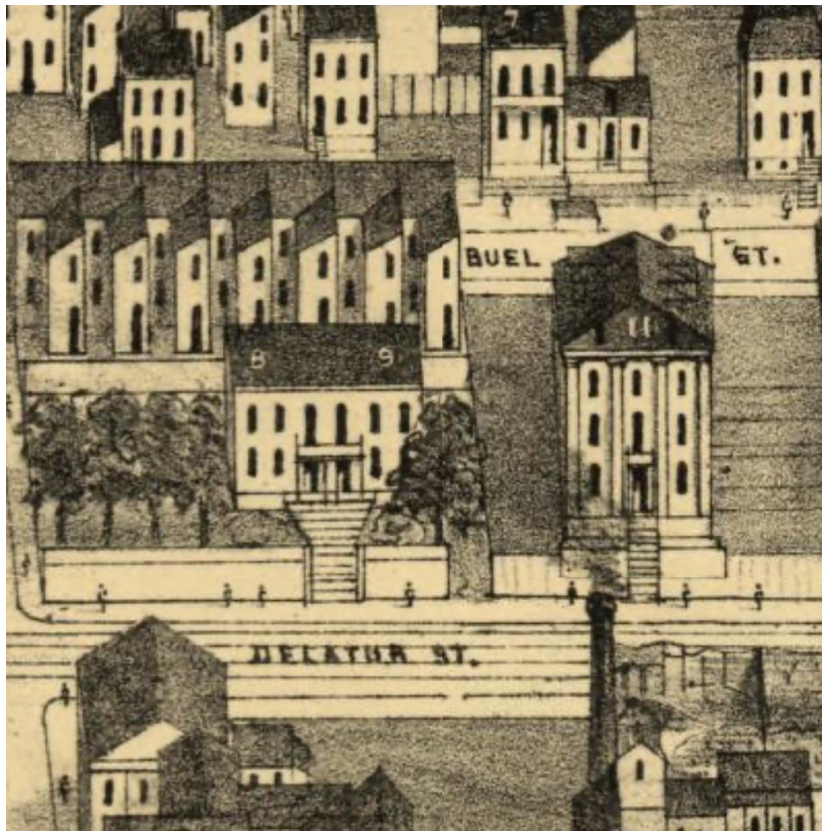


Lost Souldard

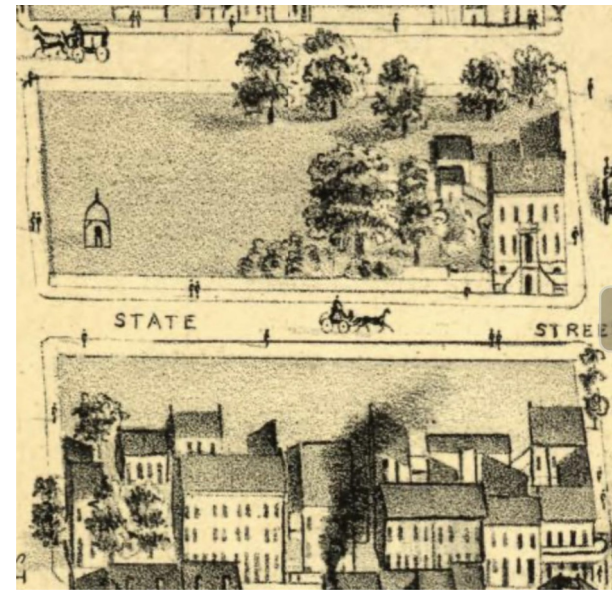
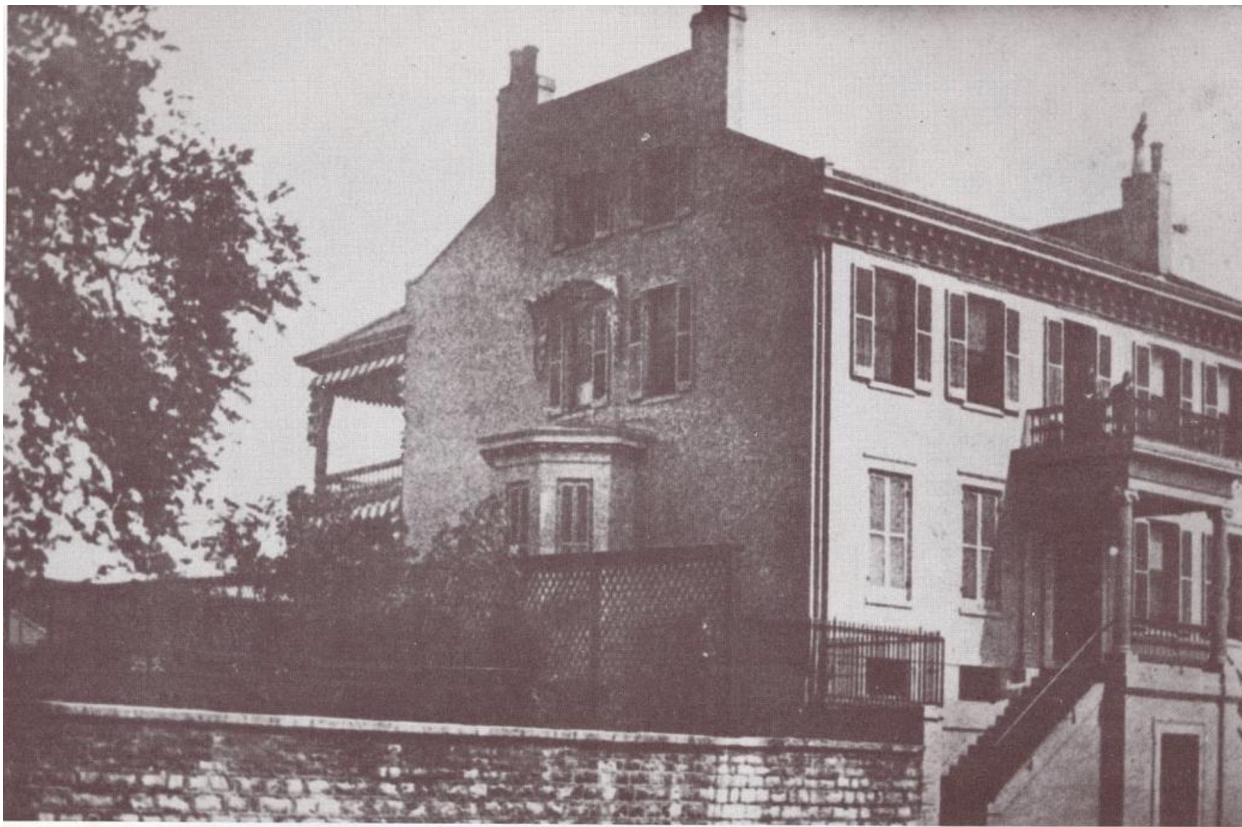
Presented by Nathan Jackson



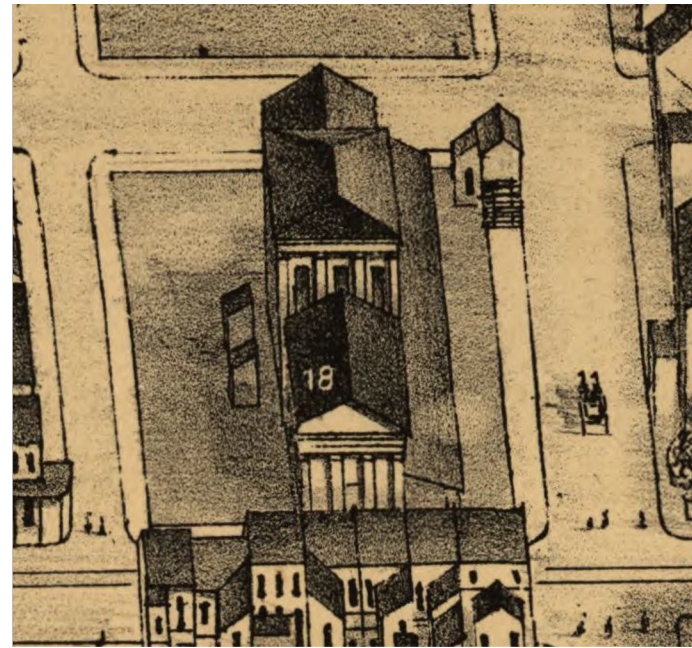
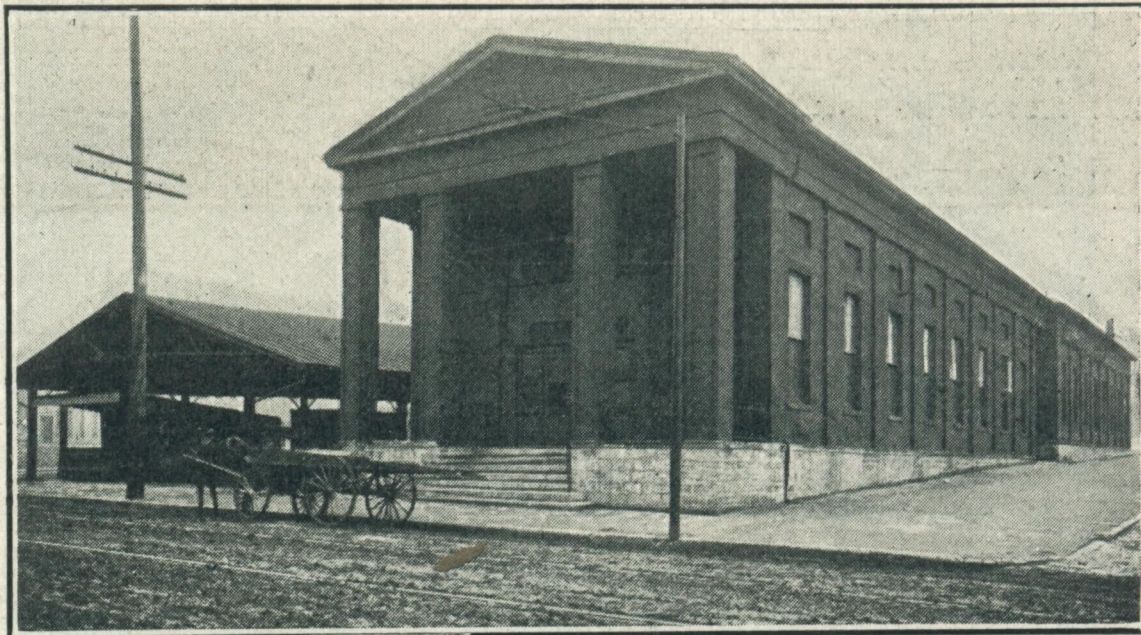
Julia Soulard mansion, built 1842, demolished 1952



Julia Souldard mansion, built 1842, demolished 1952



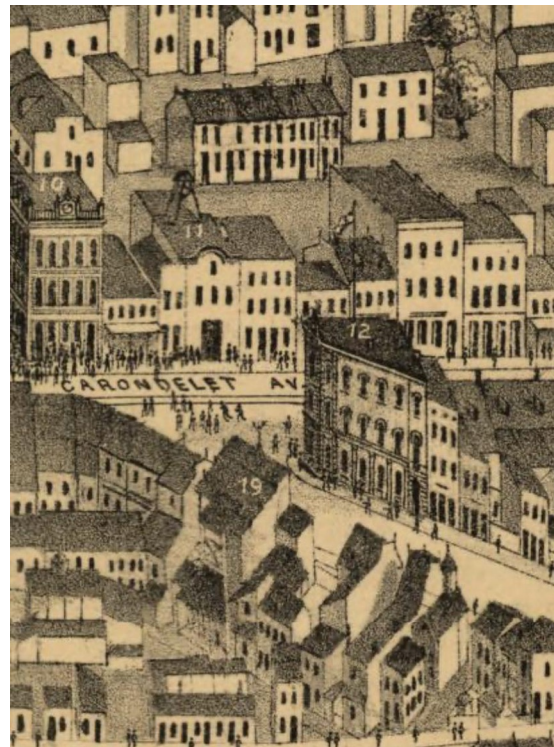
Henry G. Soulard mansion, built 1842, demolished 1896



Original Soulard Market, built 1843, demolished 1928



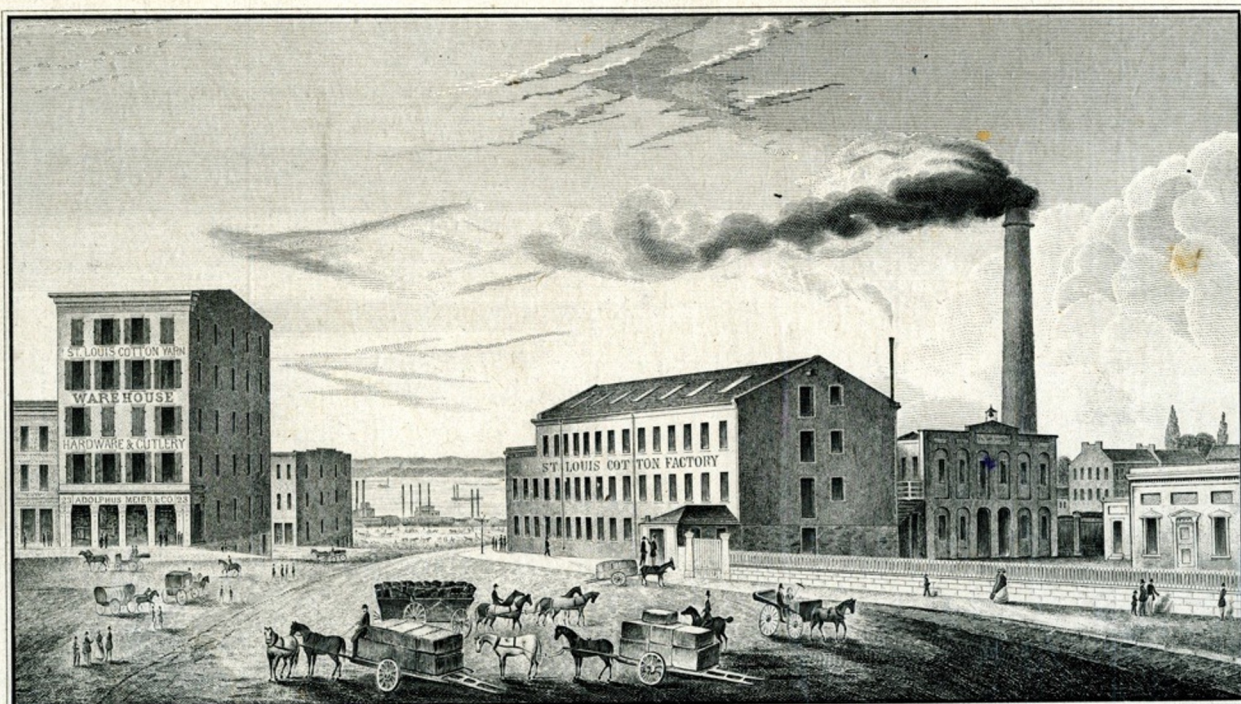
First District Police Station, built 1873, demolished 1937



Lafayette Bank, built 1863, demolished c. 1940



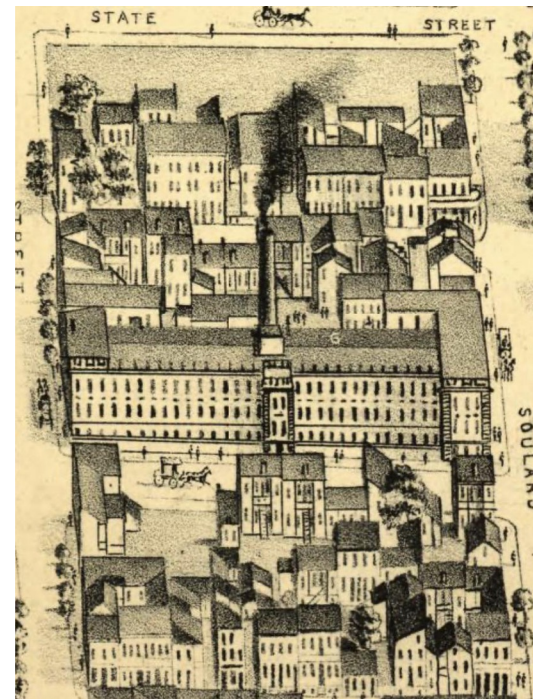
Laclede Flouring Mill, built 1857, demolished 1896



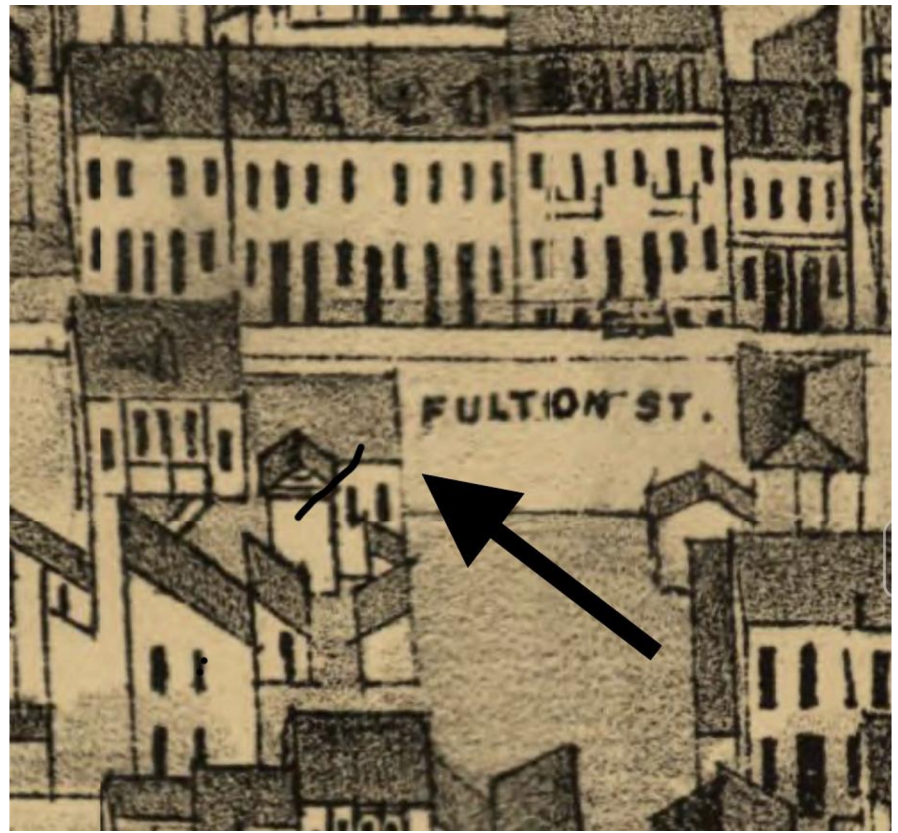
St. Louis Cotton Yarn Warehouse,
HARDWARE & CUTLERY.
Cor. of Main & Chestnut Streets.

L. Gass & Son, Inc.
ADOLPHUS MEIER & CO.
ST. LOUIS, MO.

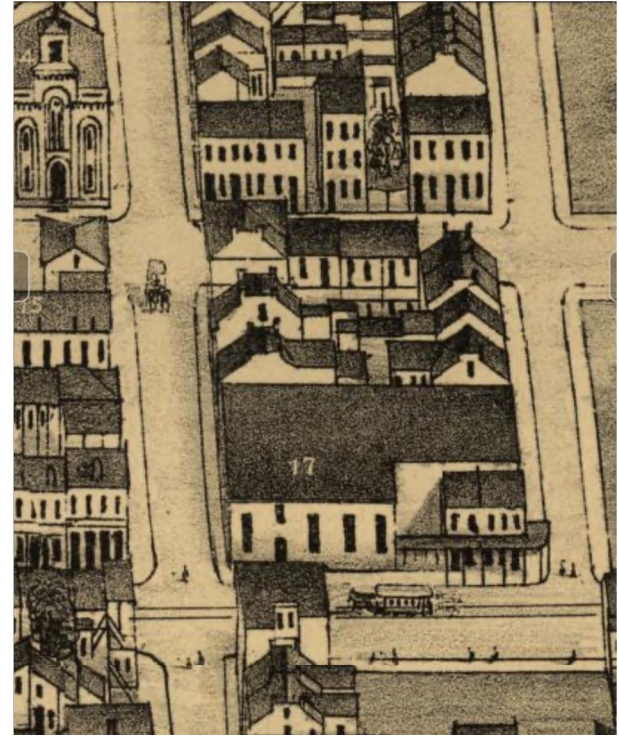
St. Louis Cotton Factory.
(SOUTH ST. LOUIS)
fronting on Lafayette, Menard & Soulard Sts.



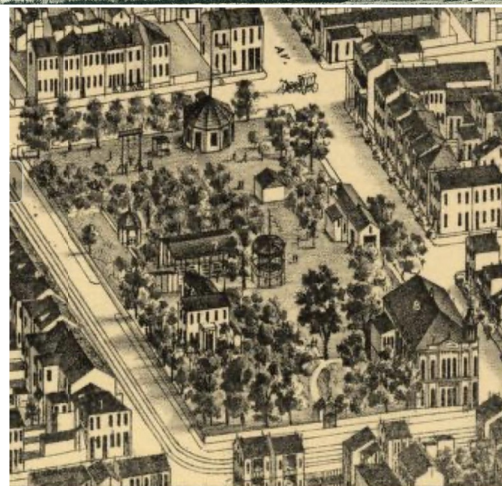
St. Louis Cotton Factory , built 1848, rebuilt 1858,1896,
demolished c. 1990



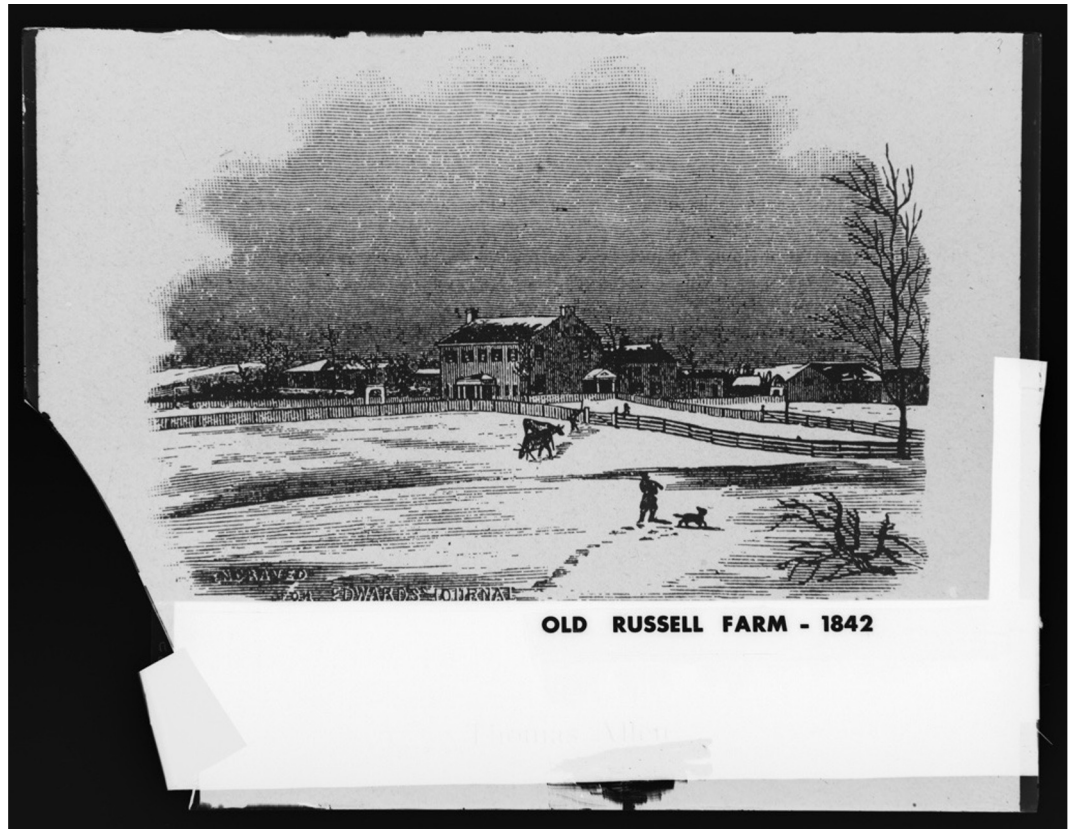
Augustus Gorla House, built 1846, demolished c. 1960



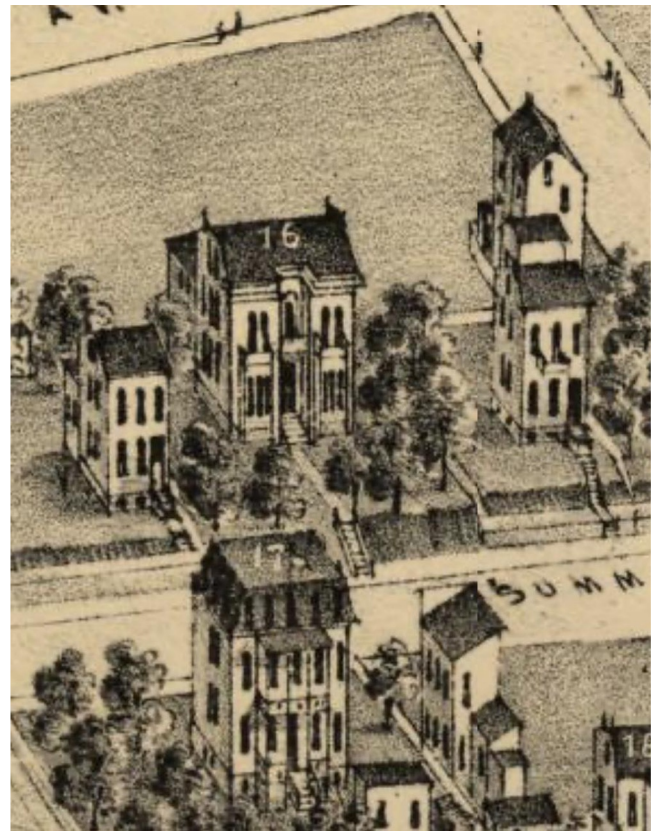
Henry Heppner residence, built 1847, demolished 1910



William Russell/Thomas Allen mansion, built 1842,
demolished 1921



Russell/Allen mansion, built 1842, demolished 1921



Roberta mansion/St. Luke's Hospital, built 1852, demolished 1962



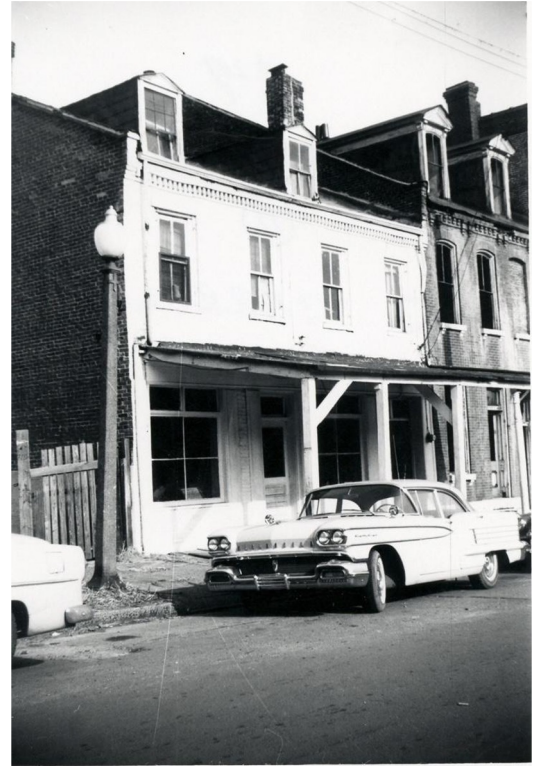
Harland Bartholomew and the 1947 Comprehensive Plan



Third Street Expressway, completed 1952



Demolition for Third Street Expressway



Urban Renewal, buildings demolished c. 1962



Urban Renewal, destruction of Bohemian Hill

Historical photograph sources

Missouri History Museum online collections

1875 Compton and Dry Map

William G. Swecosky collection

Historical American Buildings Survey

Old Frenchtown