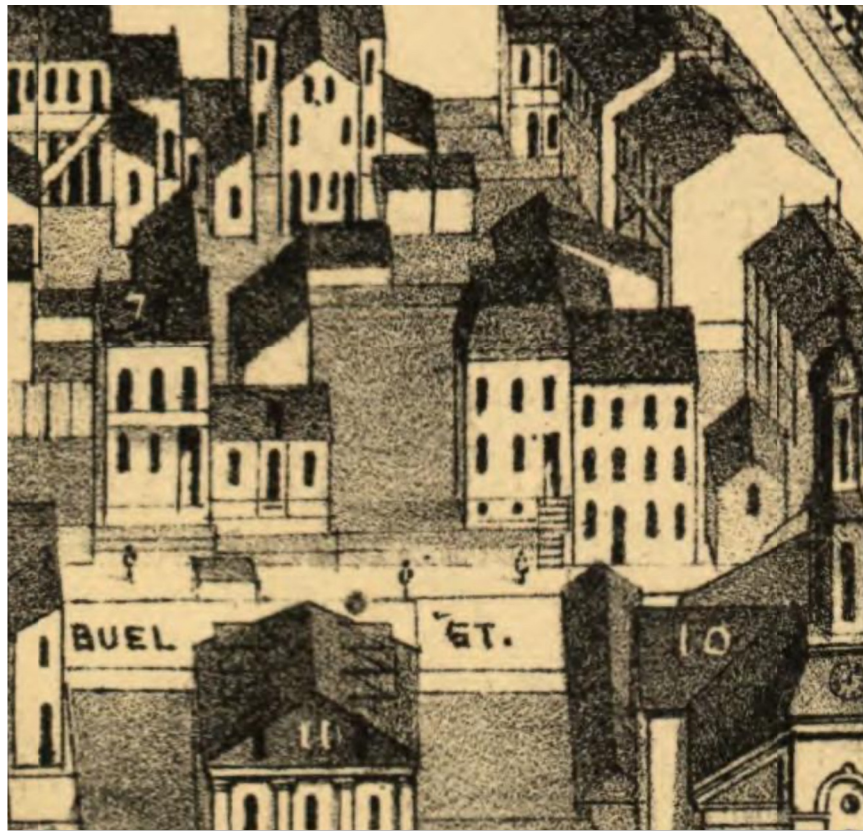


Hidden in Plain Sight: The  
Early St. Louis Buildings  
Hidden Behind Later Additions

Nathan Jackson



Ewald Maurer/Gerhard Droege House, built 1852, 1882  
addition 1417-21 S. 10th Street



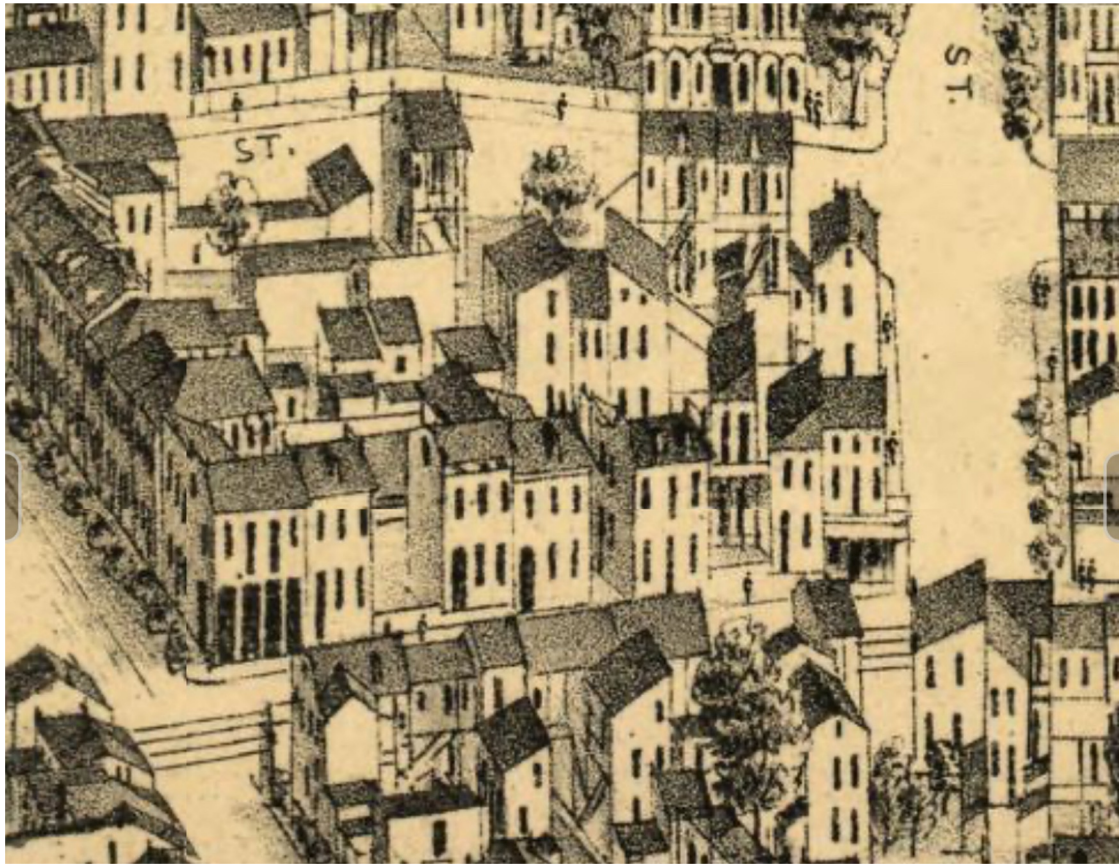
1417-21 S. 10th Street on the 1875 Compton and Dry Map





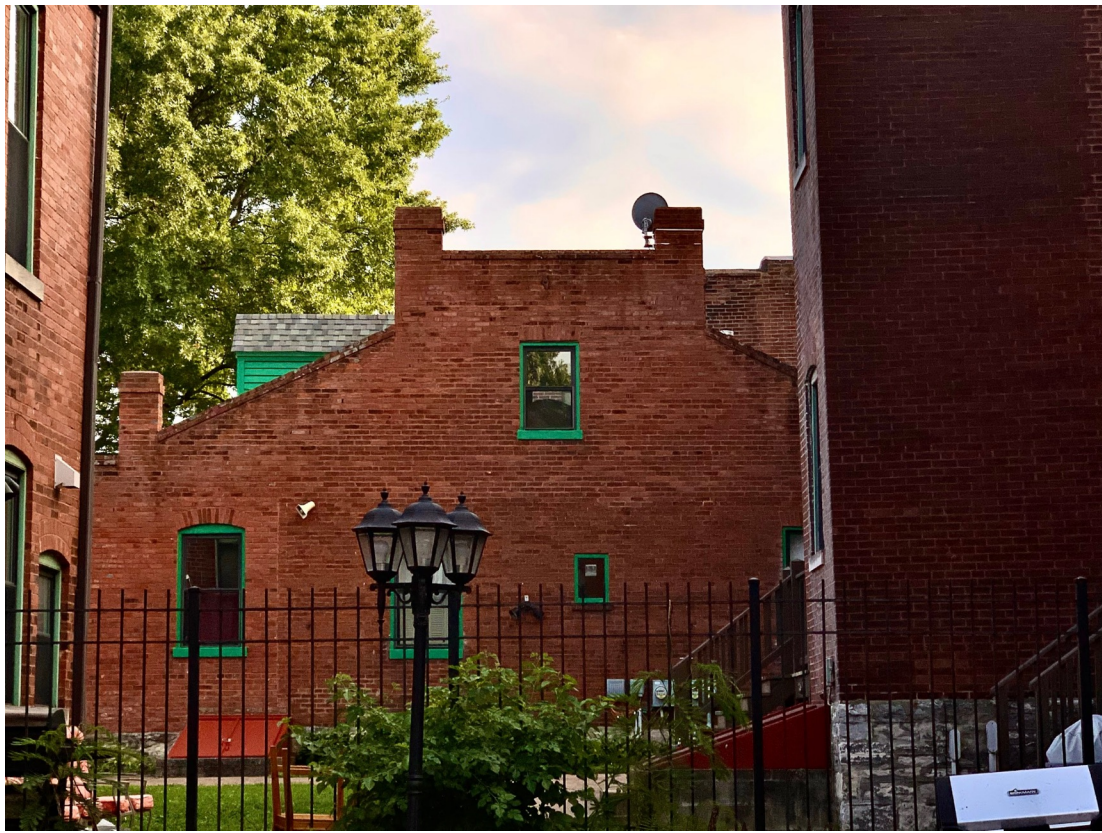
1839 S. 9th Street, built c. 1851, 1888 addition by Kluth and Boeke





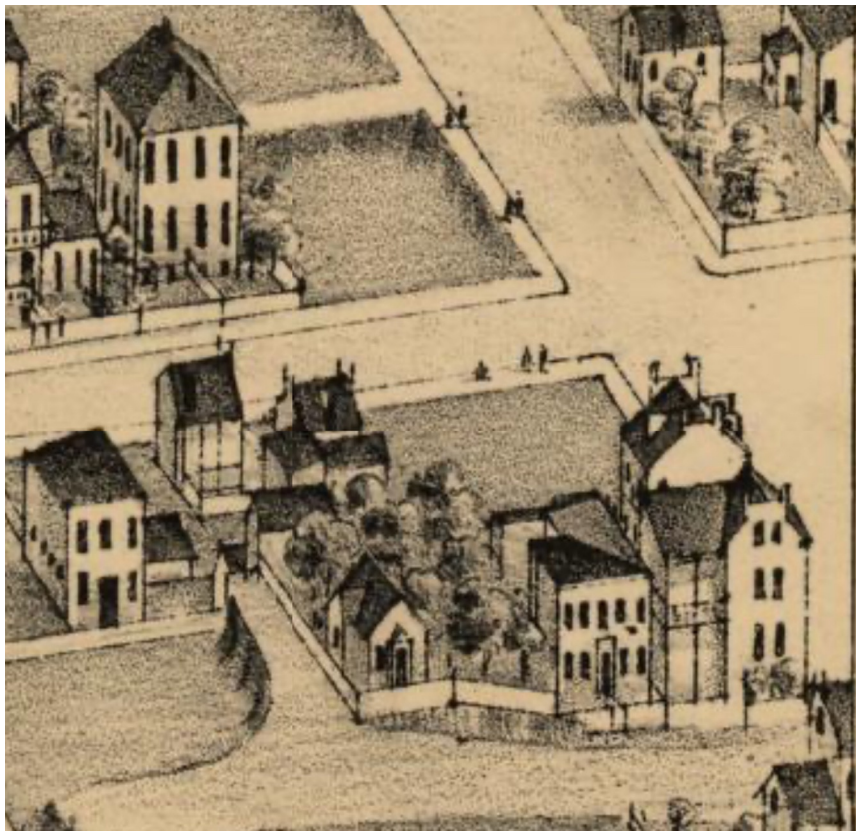
1839 S. 9th Street on the 1875 Compton and Dry Map





Adam Minwegen House, rear 2410 Menard Street,, built 1858





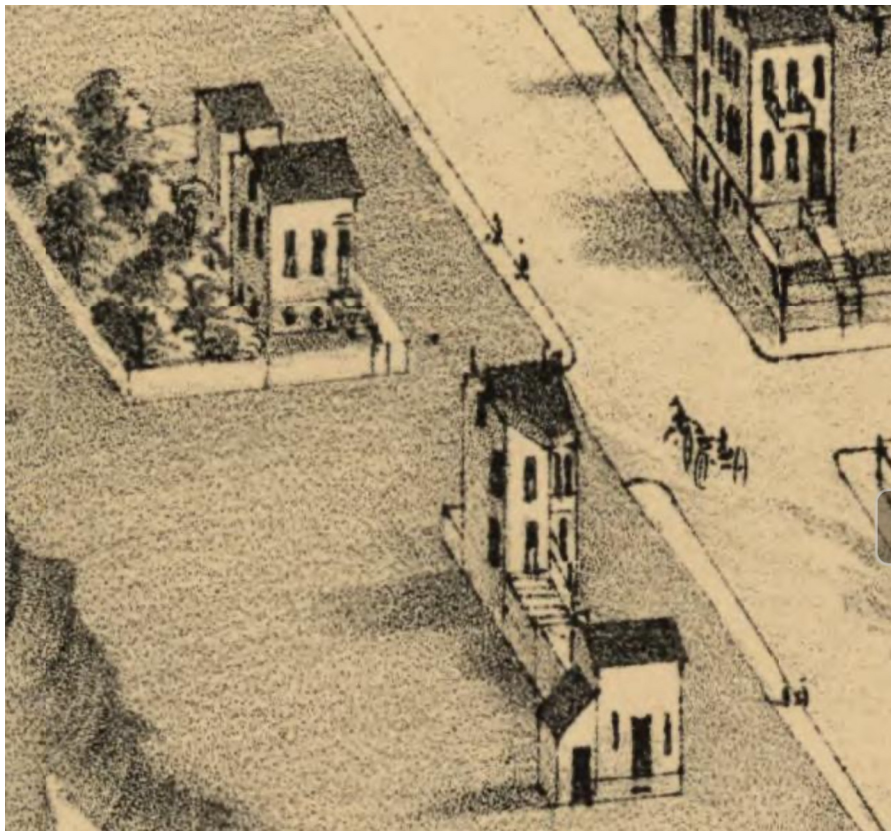
Rear 2410 Menard Street on the 1875 Compton and Dry Map





Hahn/Dietz House 2406 S. 13th Street, built 1853, c. 1870 addition



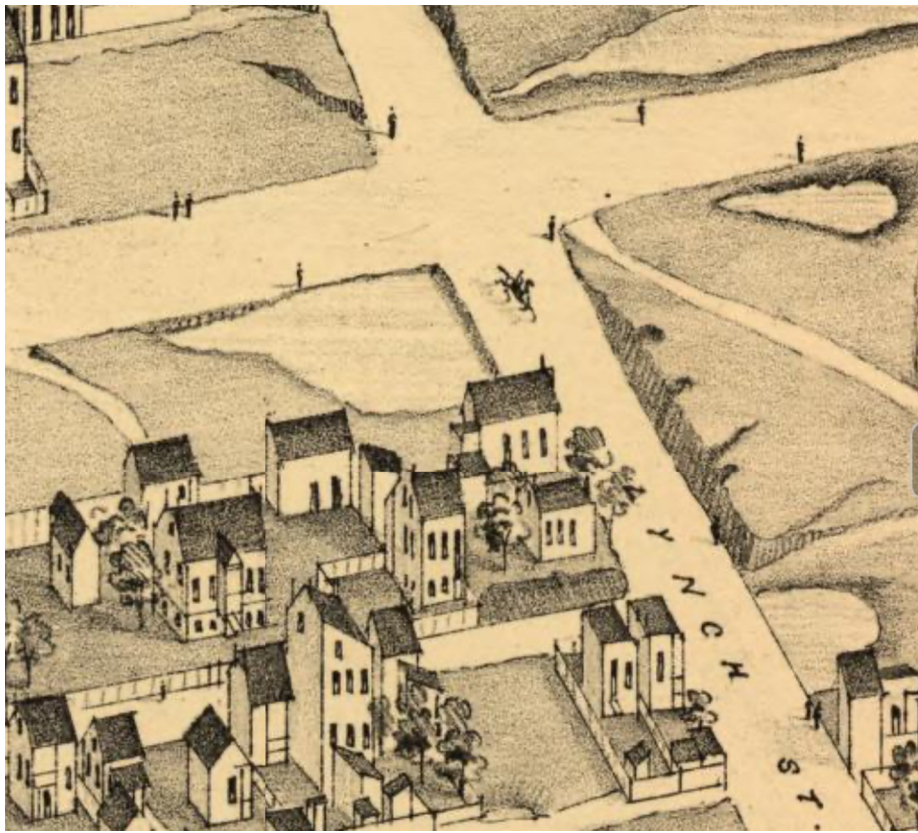


2406 S. 13th Street on the 1875 Compton and Dry Map



Julius Thamer Brewery, 2801 Indiana, built 1859, 1880 addition



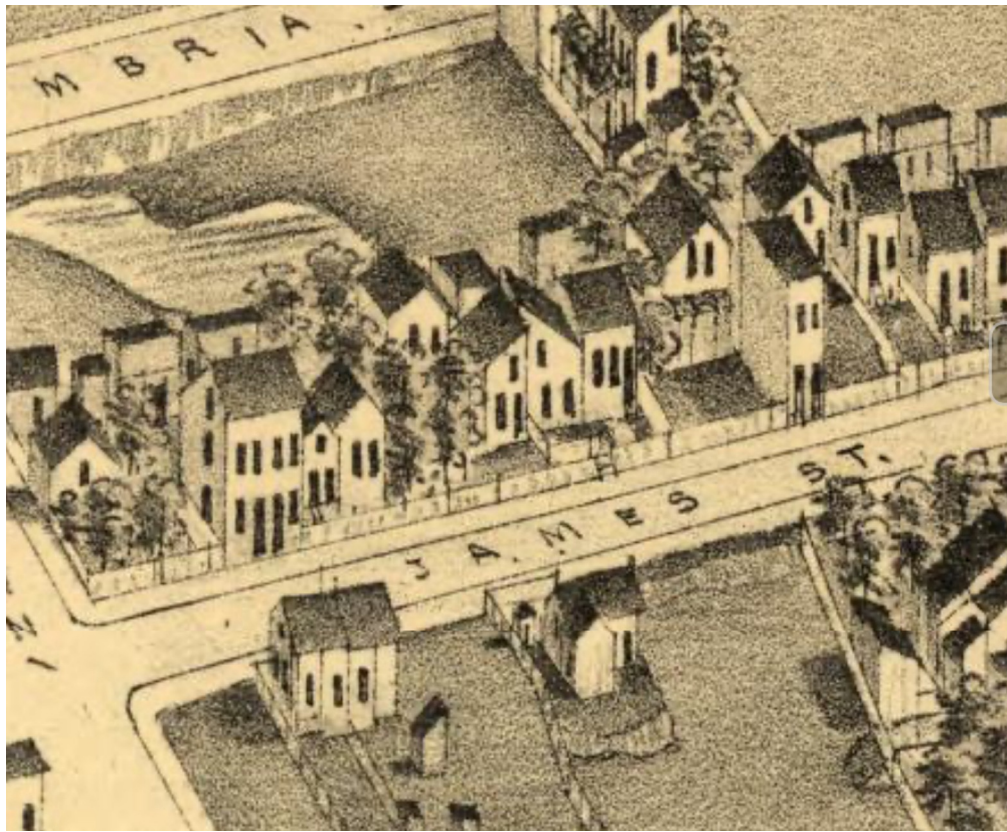


2800 Indiana on the 1875 Compton and Dry Map



Hugh O'Donnell residence, 2853 S. 18th Street, built 1866,  
c. 1880 addition





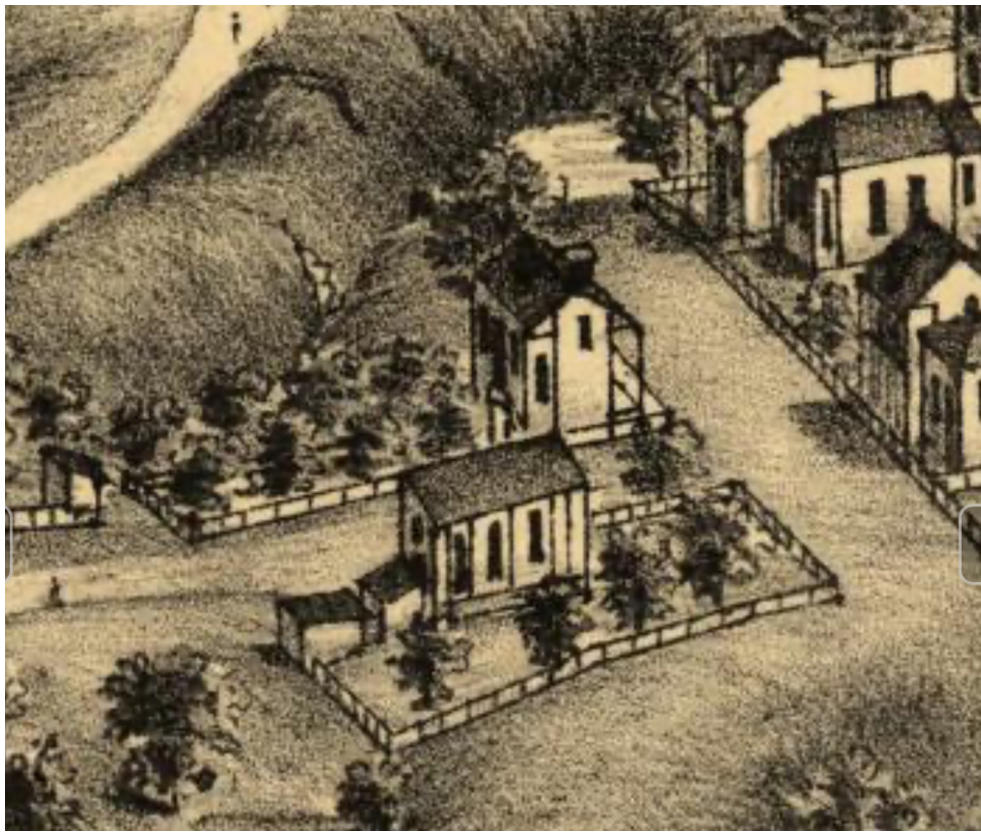
2853 S. 18th Street on the 1875 Compton and Dry Map





Doering House, rear 2002 Withnell, built 1860



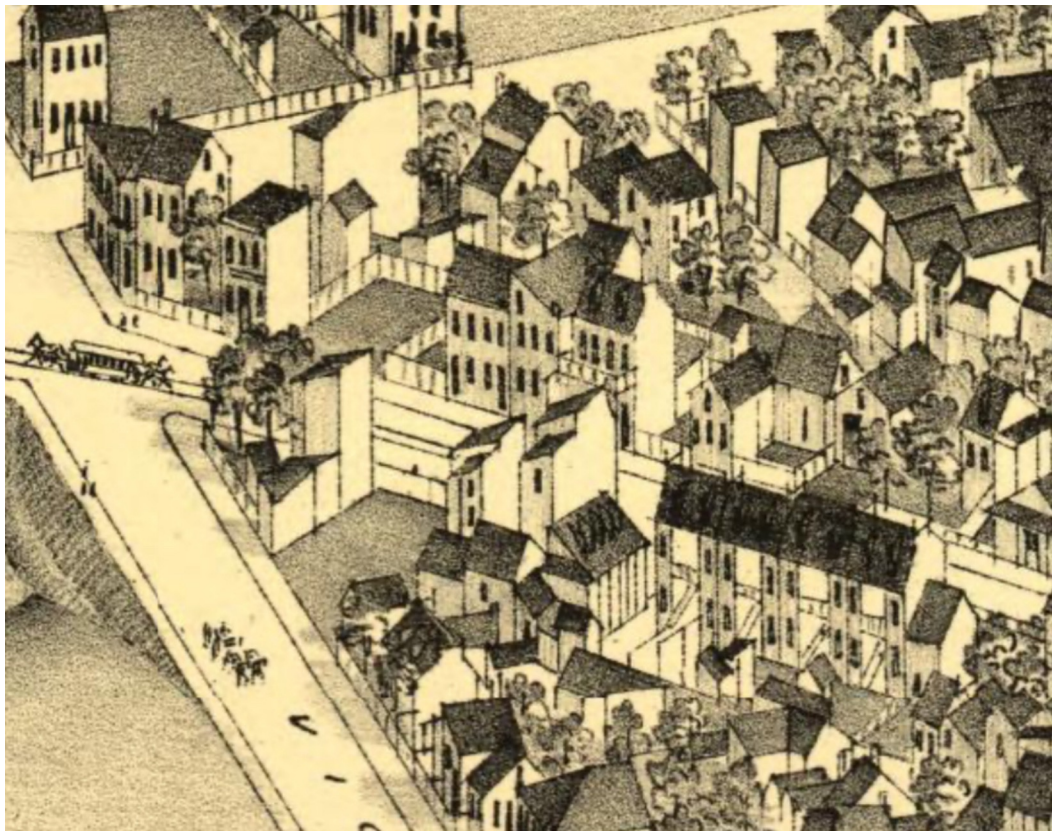


Rear 2002 Withnell Street on the 1875 Compton and Dry Map

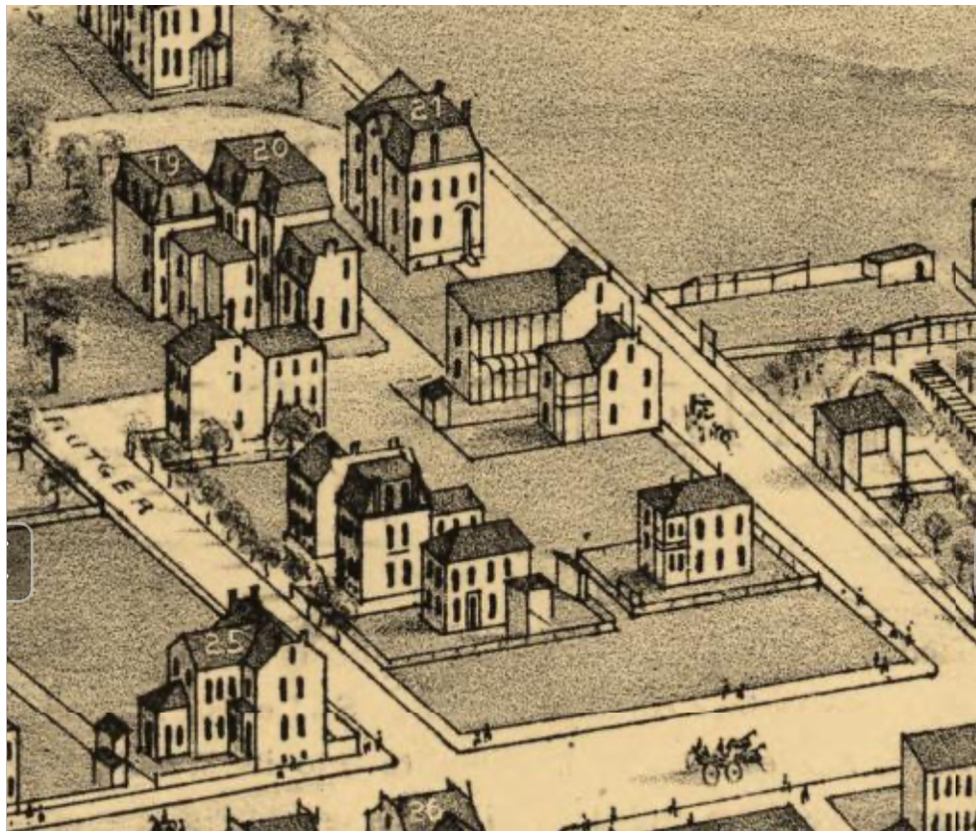


2226 Gravois, built c. 1865, c. 1890 addition





2226 Gravois on the 1875 Compton and Dry Map



Blanke House, 2013 Rutger Street, built 1867, post 1896 tornado repair



# Questions and Answers